

Some Issues Related to Animal ID & Beef Traceability: Transforming Cattle into Beef in the U.S.

Prepared by:

Dillon M. Feuz

University of Nebraska-Lincoln

James G. Robb and Erica L. Rosa

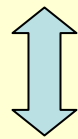
Livestock Marketing Information Center

Can we trace information from calf to steak or ground beef package?



Maybe

Is that what a National Animal ID System is designed to do?

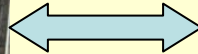


NO



Live Animal

ID YES



The Industry Has Changed

- Not A Carcass based Industry
- U.S. Packing Plants are:
 - High capacity/volume
 - Transport products long distances
 - Relatively concentrated (firms and geography)
 - Produces high quality safe products



The Production Process

- Disassembly Process
- Four Major Stages of
 - Slaughter or harvest
 - Cooler
 - Fabrication
 - Holding cooler and shipping

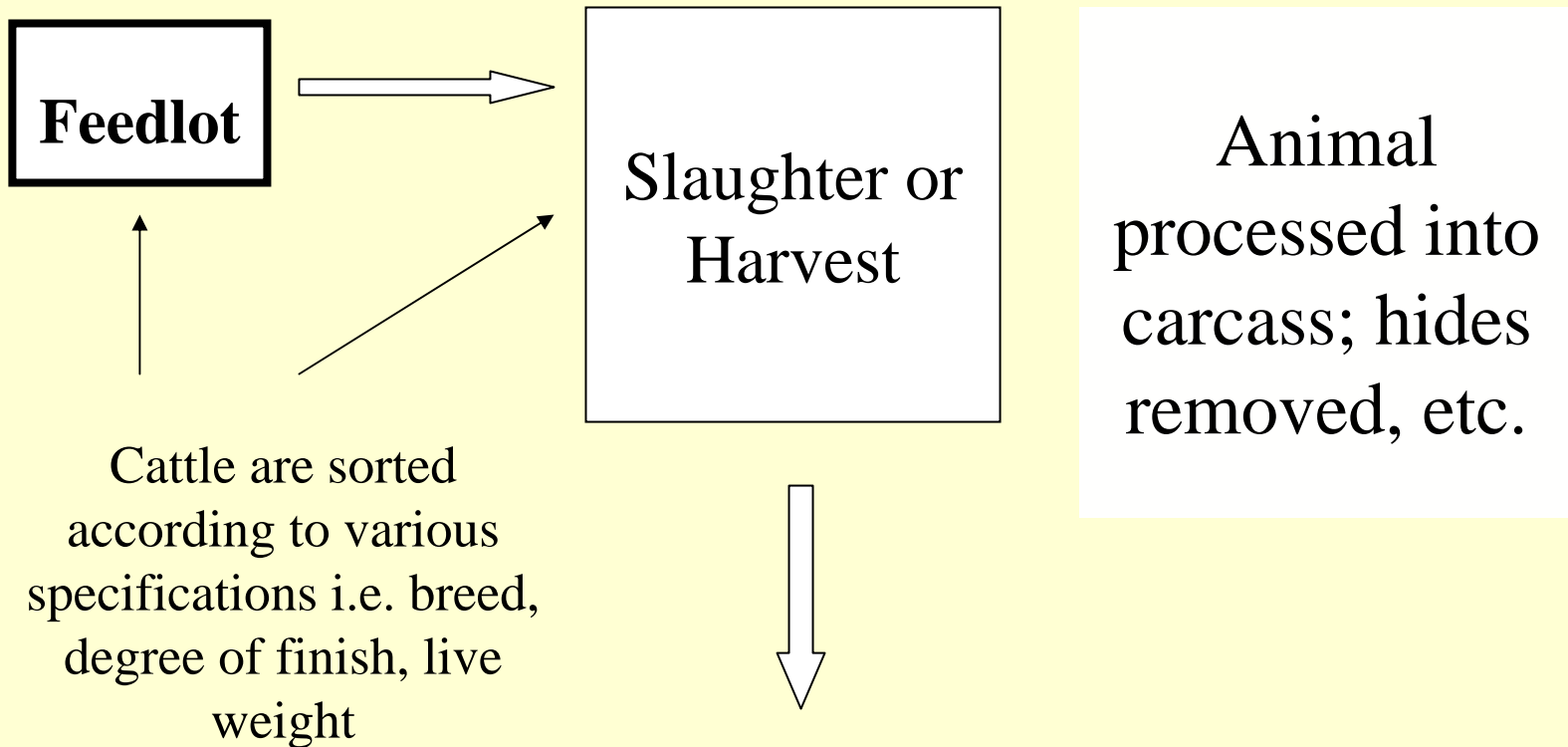


Stage 1 Input

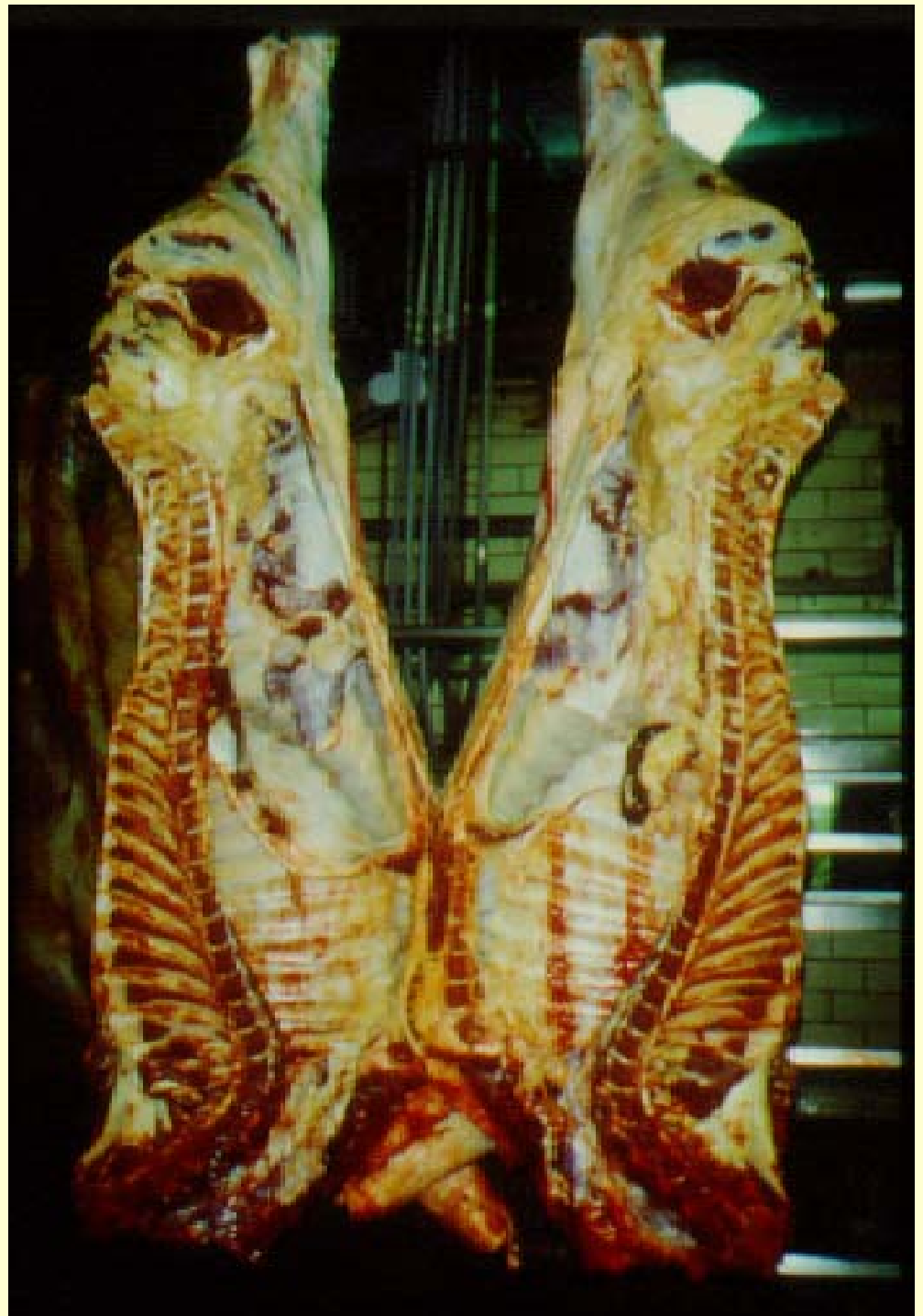


Stage 1

Packer Operations



Stage 1 output
Stage 2 Input
Individual ID
YES



Stage 2



Cooler

Carcasses are sorted
and assigned into
batches



Output 2 Input 3

Individual Carcass

ID YES



Stage 3



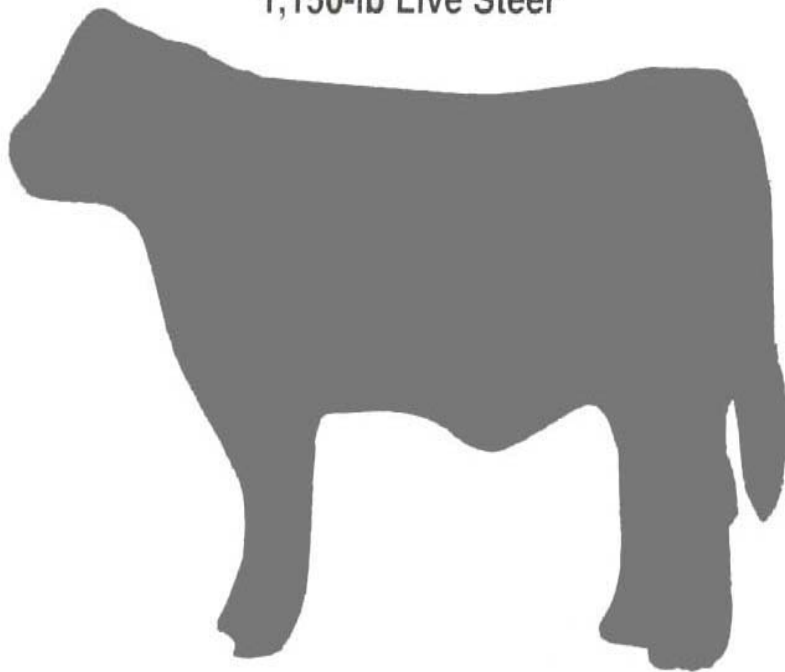
Fabrication
Floor

Batches are broken
down into primals,
sub-primals and cuts;
products are boxed

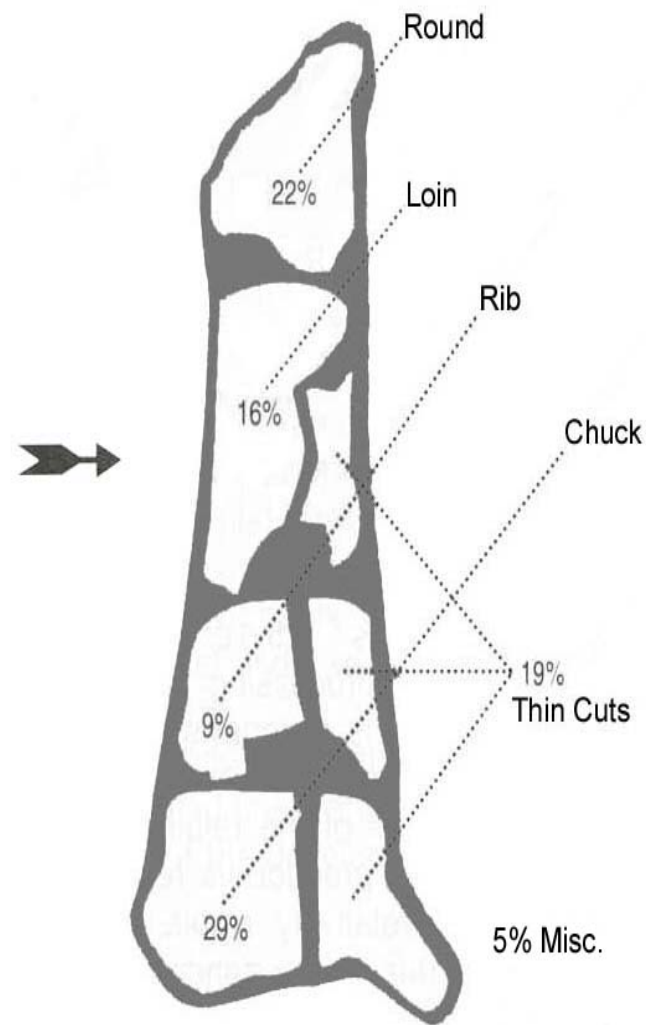




1,150-lb Live Steer



714-lb Carcass



Output 3 Input 4

Sub-Primals ID NO





Stage 4

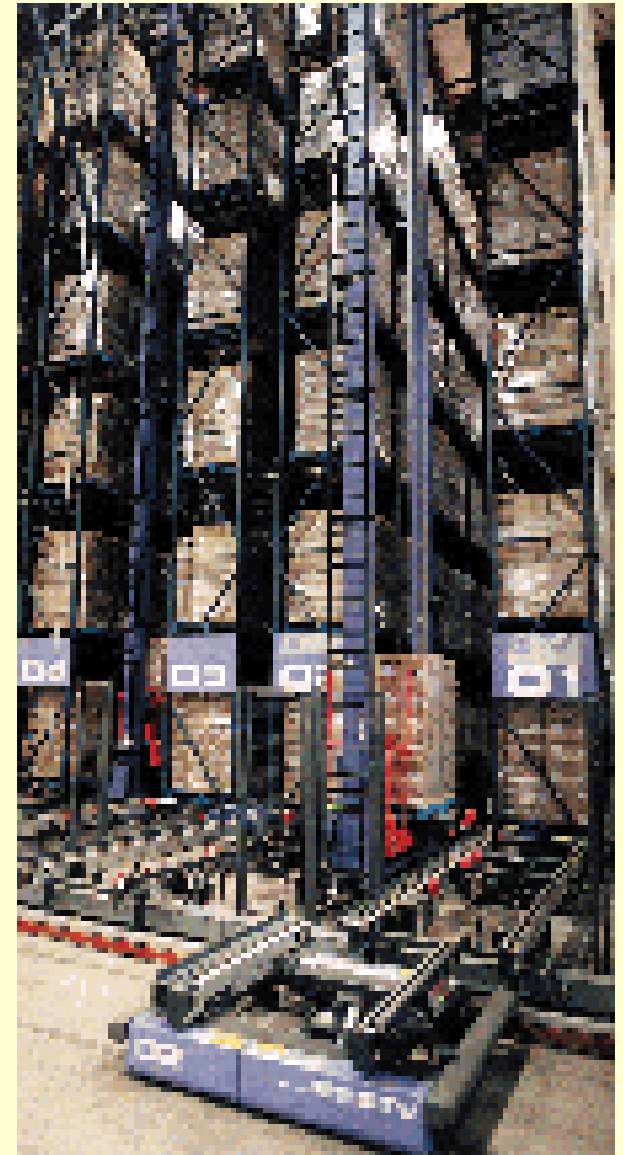


Holding Cooler
And
Shipping

Boxes are sorted then
stored or transported
(usually by
refrigerated packer-
owned truck)

Individual Animal ID NO

Batch Traceability Yes



Distribution

Individual ID NO

Batch Traceability YES



Sub primal to individual cut Batch Traceability YES



Retail Case

Batch Traceability YES



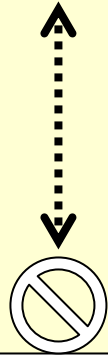


Traceability Challenge

- NAIS is “live animal traceback”
- Linear Traceability
 - Carcass to fed cattle to stocker to calf
 - Steak to sub-primal to box to plant to batch
- Understanding the Fabrication Stage
 - Becomes a function of time or batch
 - Animal ID disconnection
 - A pen of fed cattle could be in multiple batches
- Forward and Backward Traceability Possible



Traceability Challenge



Fabrication
Floor

