

Managing In These Markets

- U.S. and World are In a Major Recession – Demand Issues
- Volatility Will Continue
- Shocks Will Continue (9-11-2001, BSE in late 2003, ?)
- Grains (Corn) Still A Concern/Factor
- Begin Planning for Higher Prices in 2010-11



The Big Picture

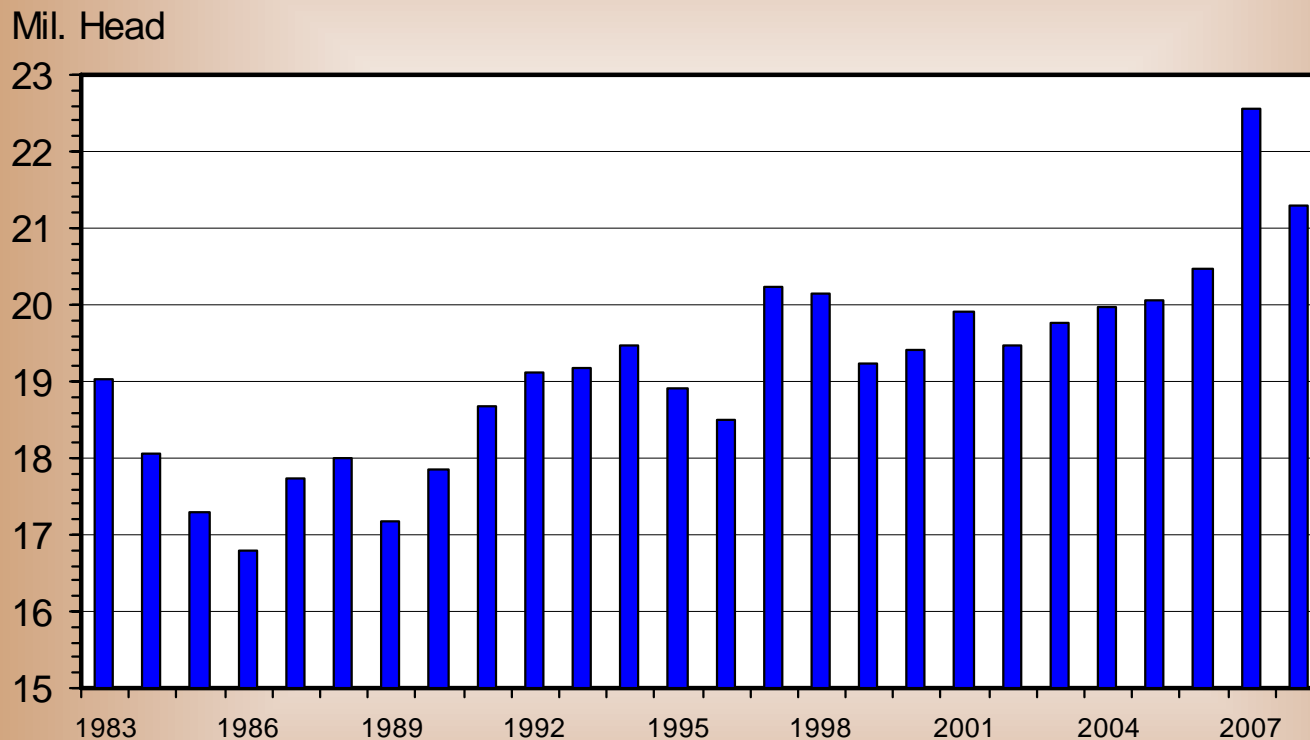


Wal-Mart's wide aisles and broad selection of merchandise accommodate 100 million shoppers a week.

Livestock Marketing Information Center

DECEMBER 1 MARKET HOGS

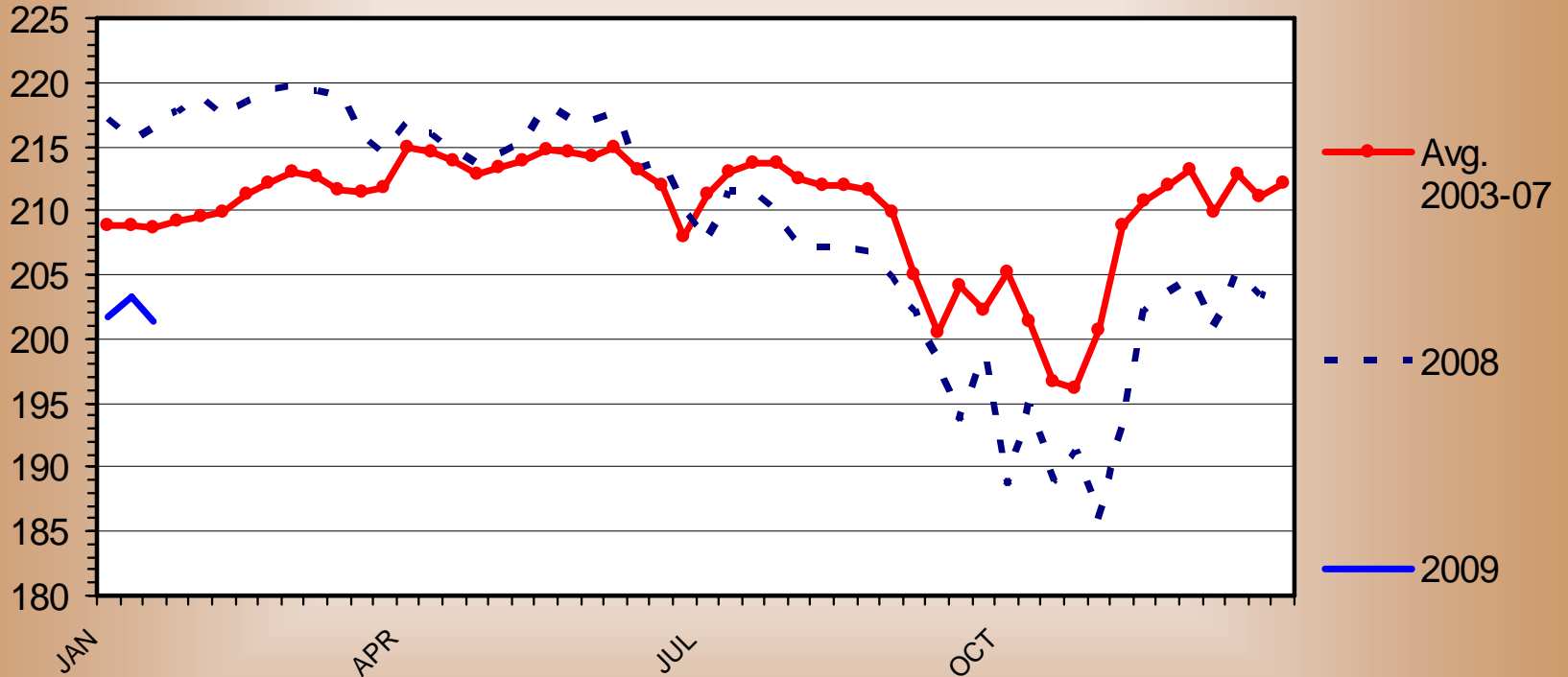
Under 60 Pounds, U.S.



BROILER EGGS SET

Weekly

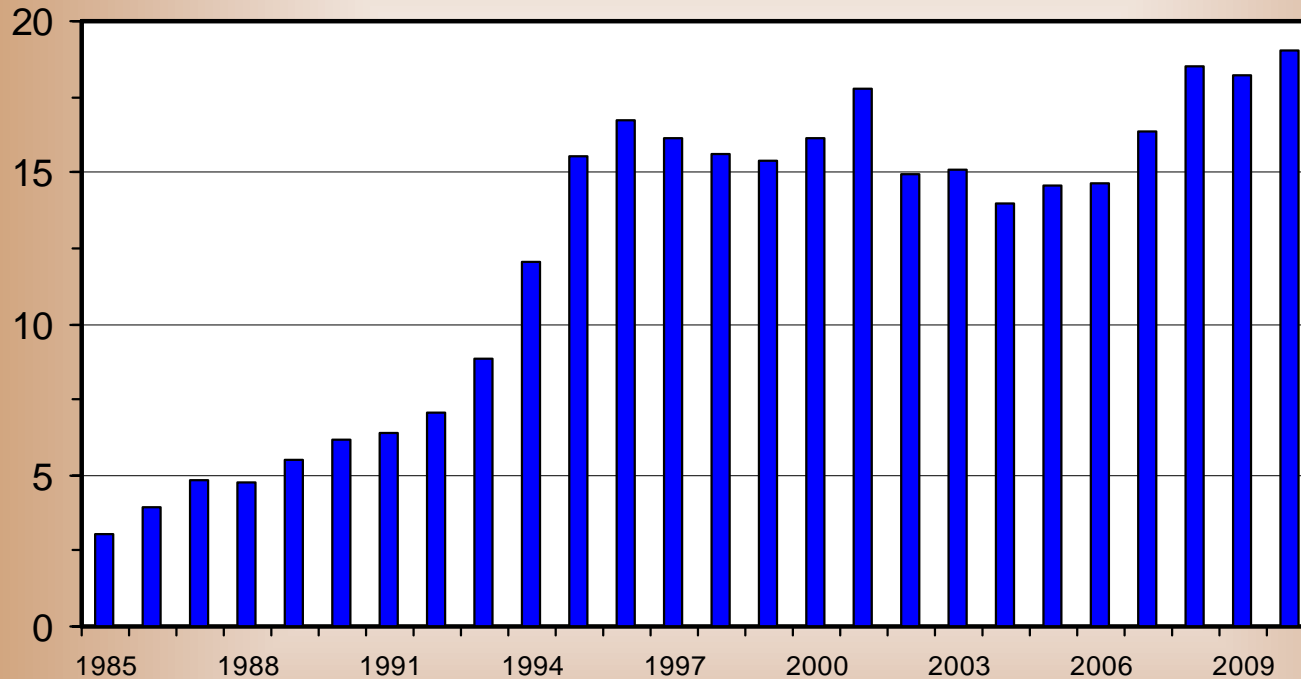
Mil. Eggs



U S BROILER EXPORTS

As a Percentage of Broiler Production, RTC, Annual

Percent

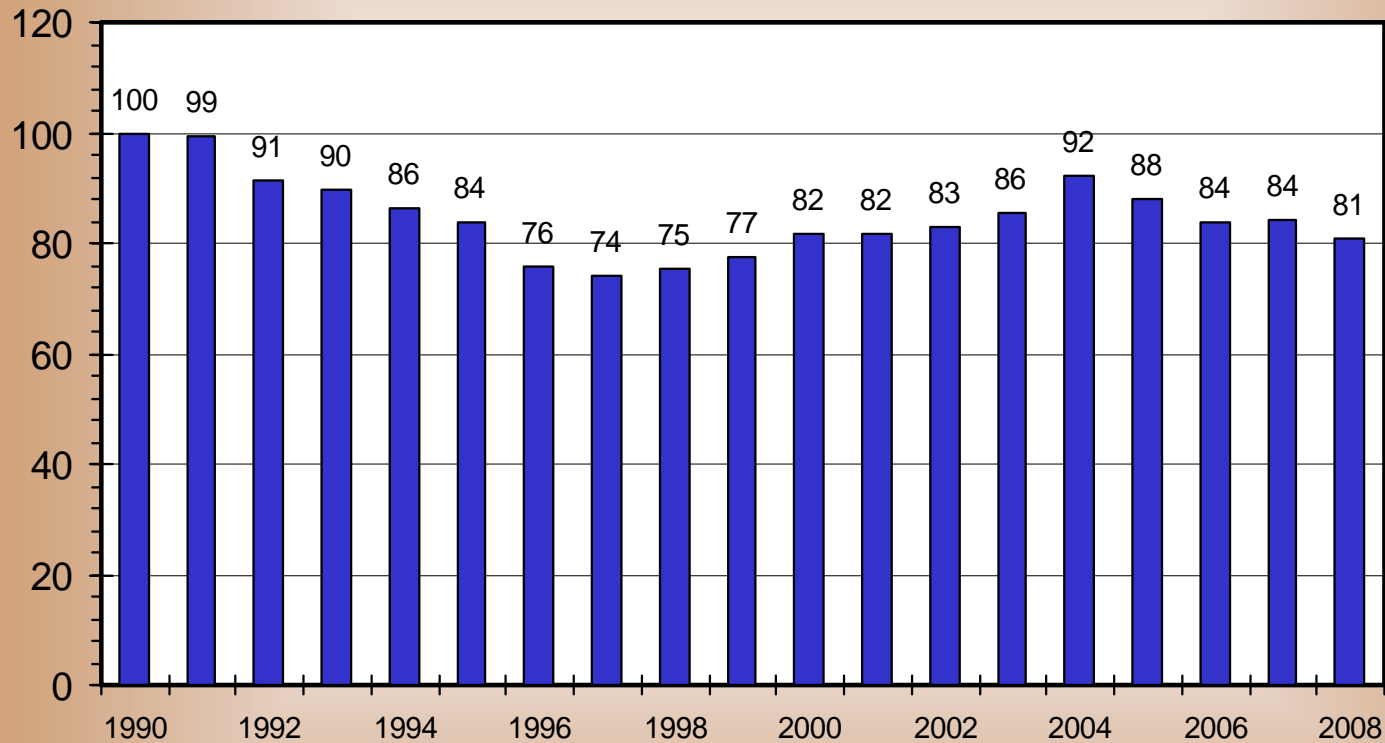


Livestock Marketing Information Center

RETAIL ALL FRESH BEEF DEMAND INDEX

Third Quarter, Using CPI 1990=100

Index Value

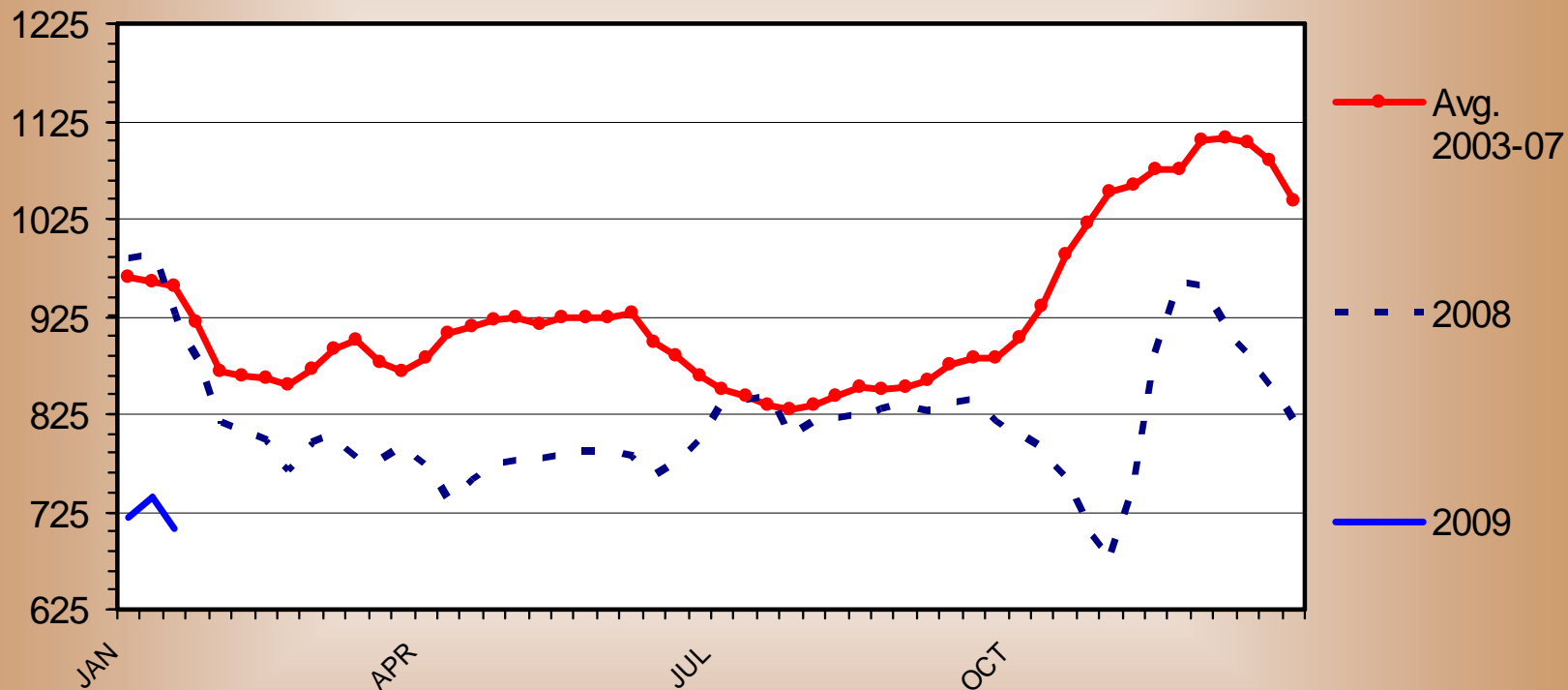


Livestock Marketing Information Center

WHOLESALE BEEF FULL TENDER PRICES

Musl-On, 5 Pounds and Up, Weekly

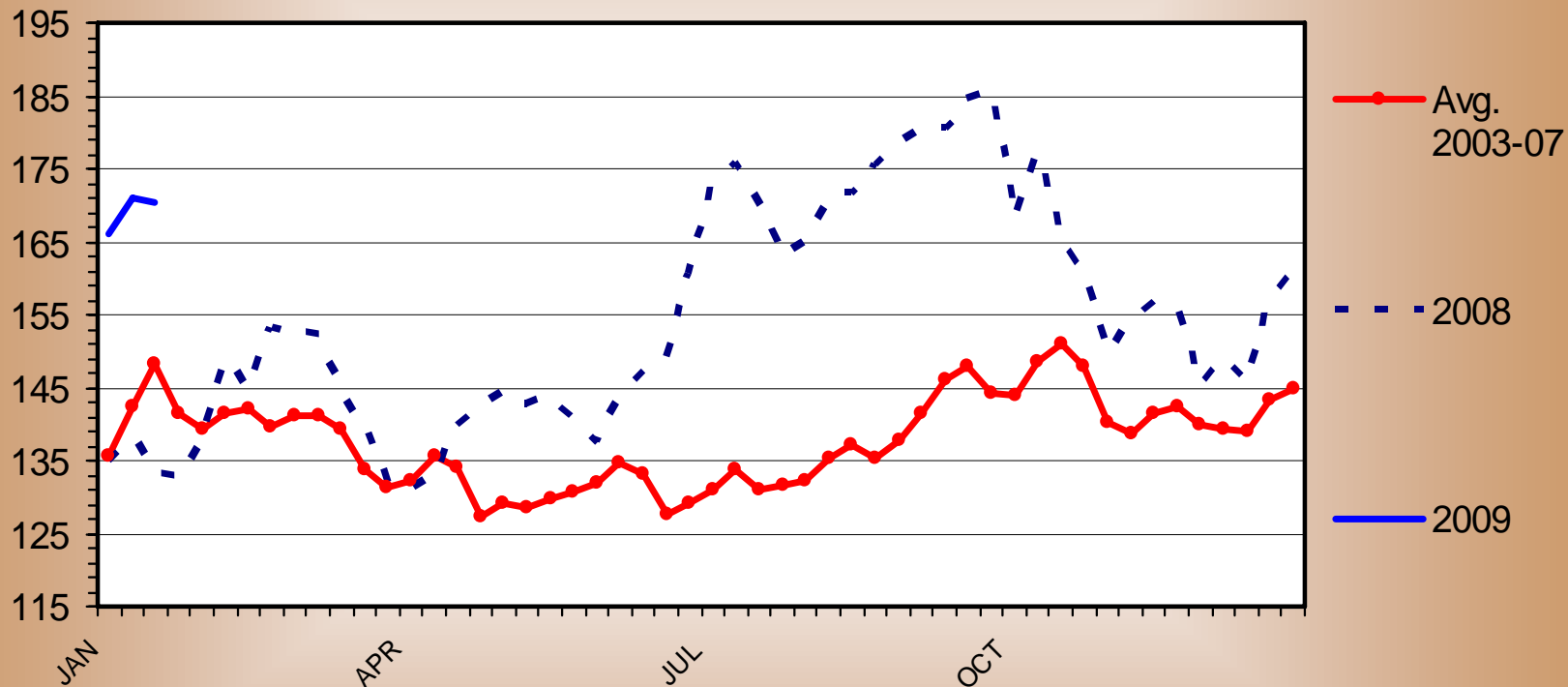
\$ Per Cwt.



WHOLESALE BEEF CHUCK PRICES

Boneless 2 Piece, Weekly

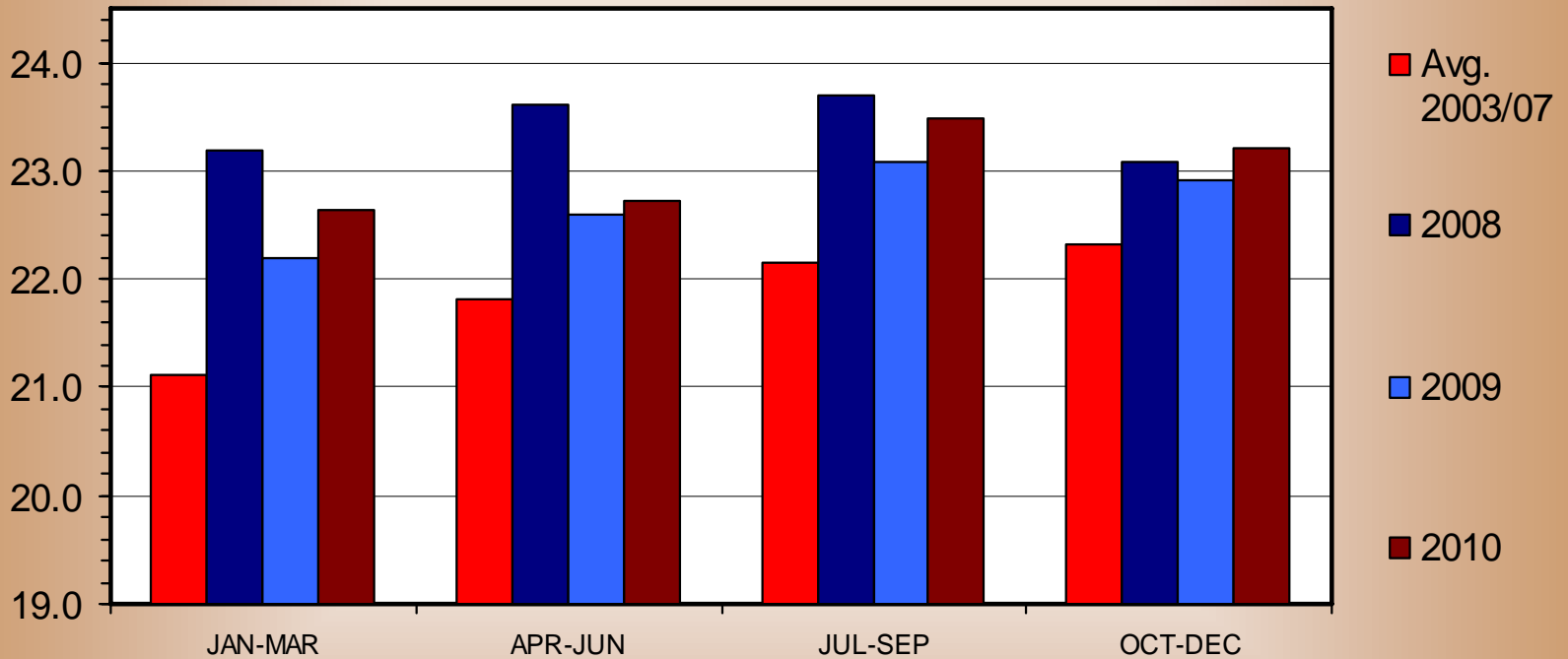
\$ Per Cwt.



TOTAL RED MEAT & POULTRY PRODUCTION

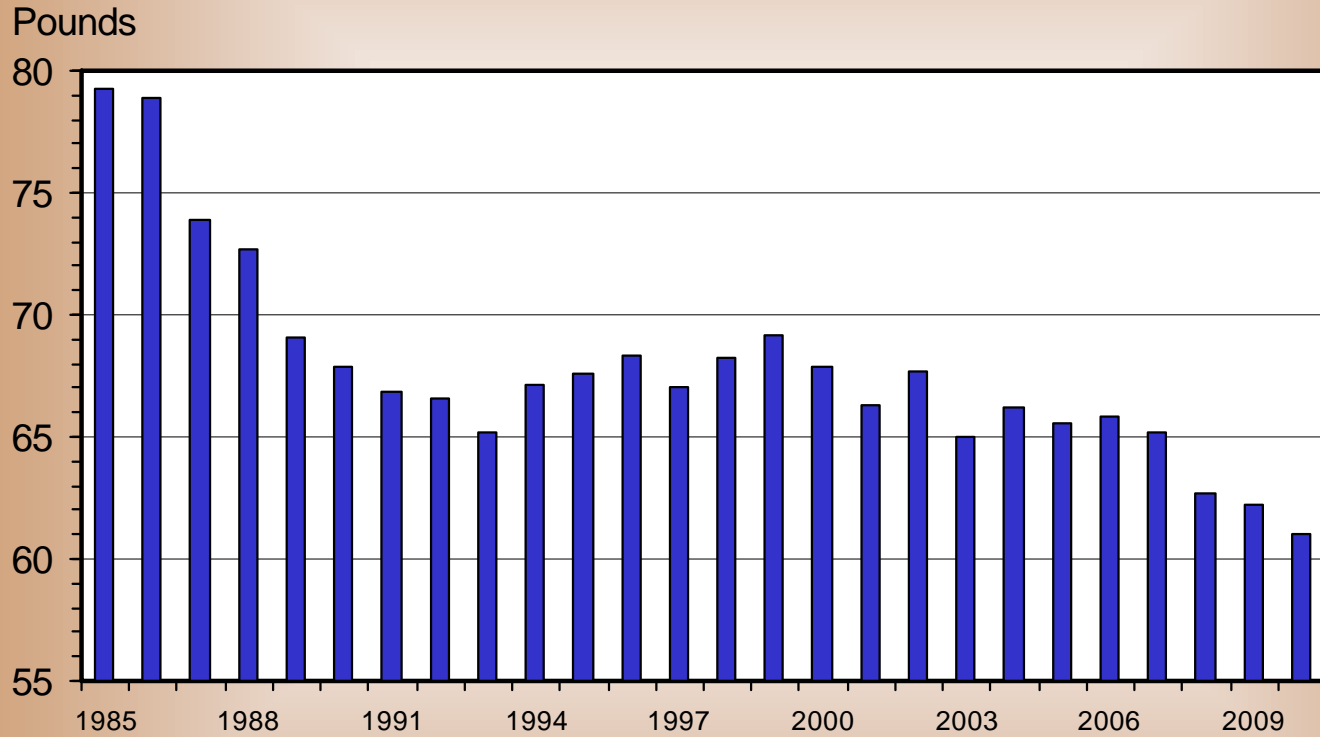
Quarterly

Bil. Pounds



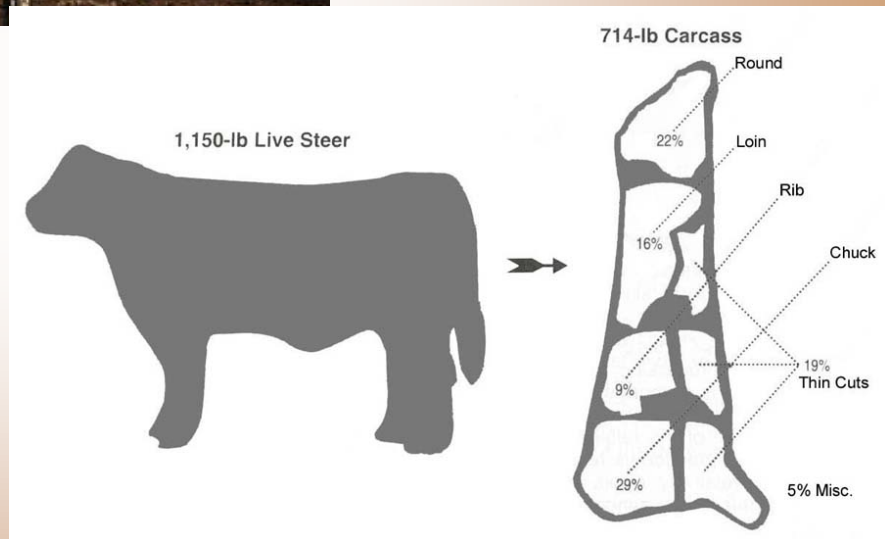
U S BEEF CONSUMPTION

Per Capita, Retail Weight, Annual





Fed Cattle

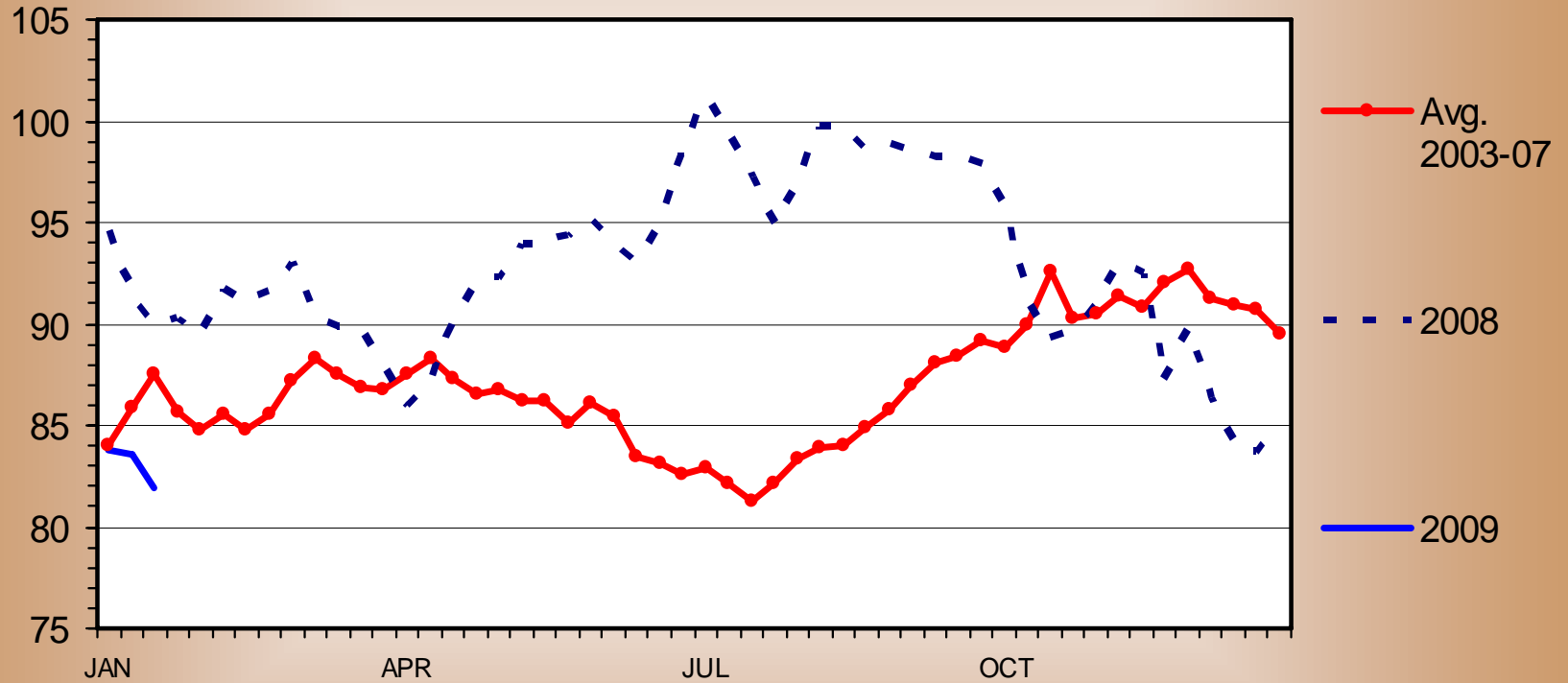


Livestock Marketing Information Center

SLAUGHTER STEER PRICES

5 Market Weighted Average, Weekly

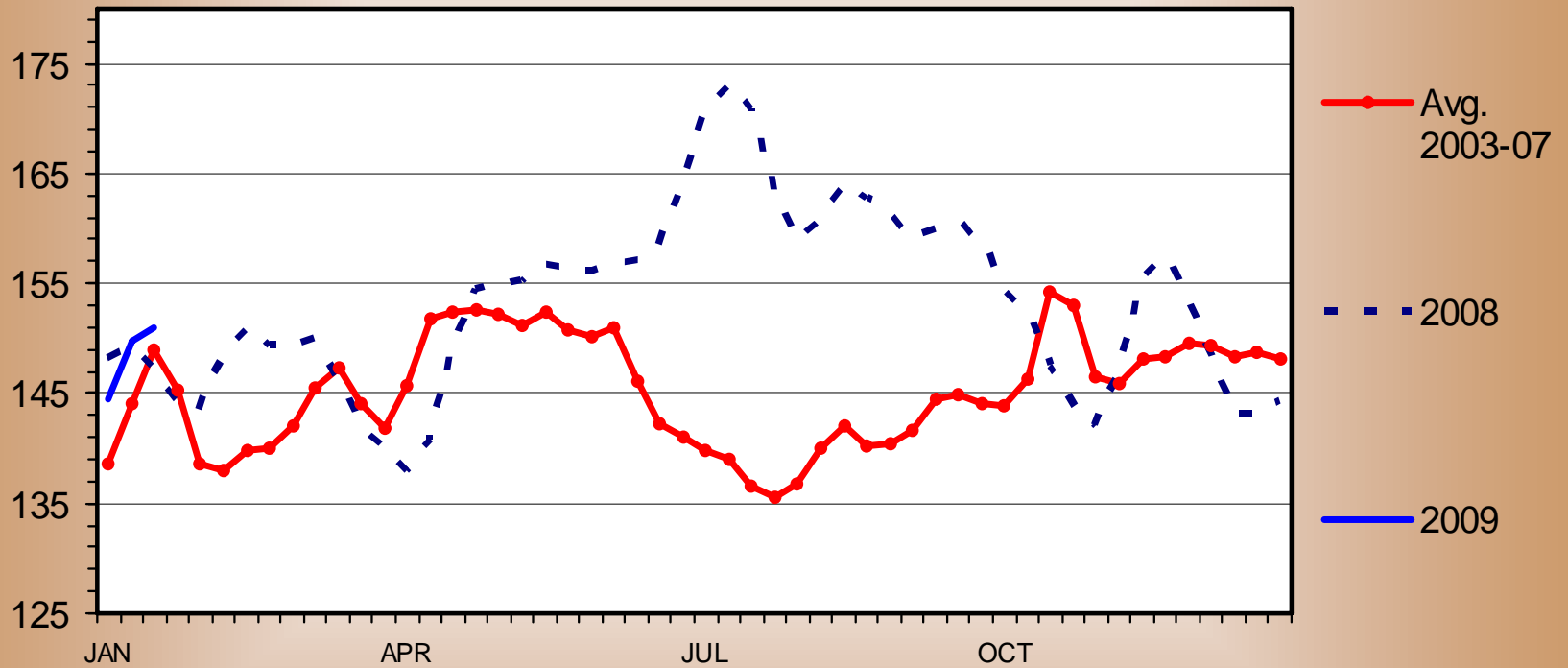
\$ Per Cwt.



BOXED BEEF CUTOUT VALUE

Choice 600-900 Lbs. Carcass, Weekly

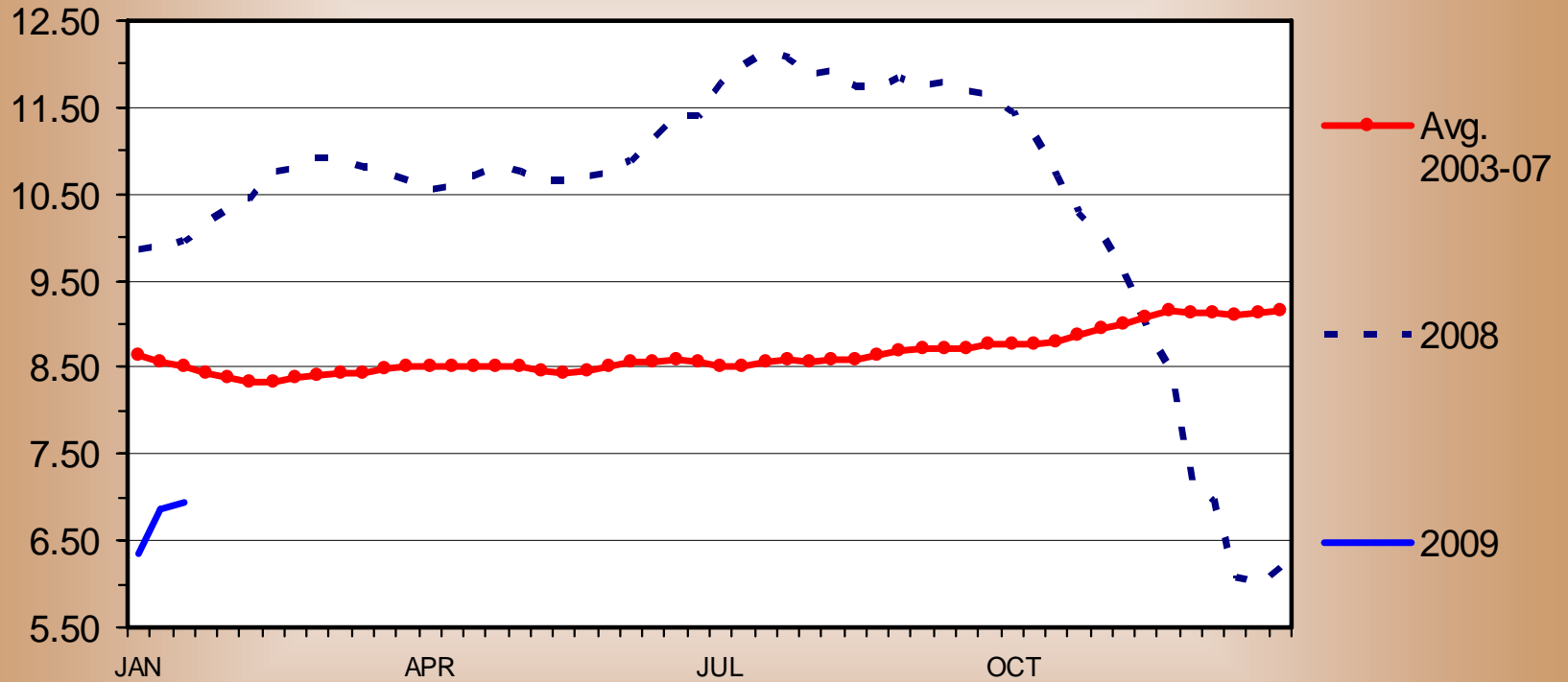
\$ Per Cwt.



STEER HIDE AND OFFAL VALUE

Live Animal Basis, Weekly

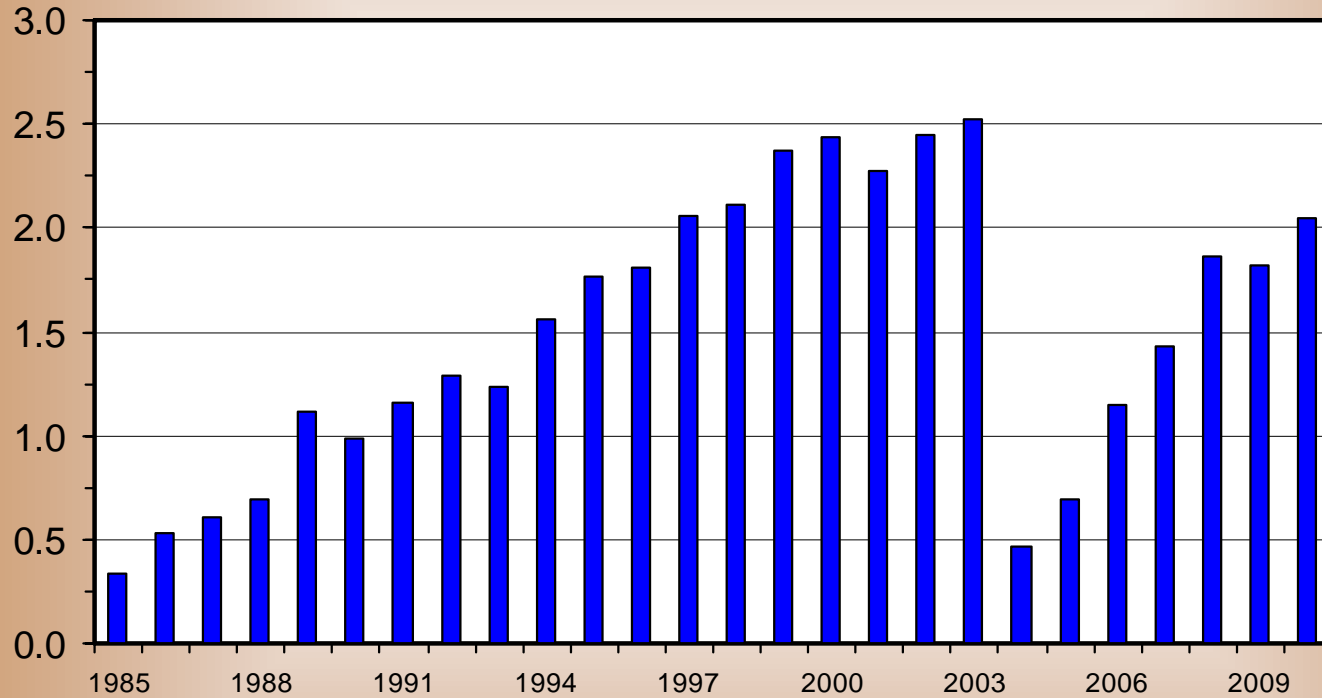
\$ Per Cwt.



U S BEEF AND VEAL EXPORTS

Carcass Weight, Annual

Bil. Pounds

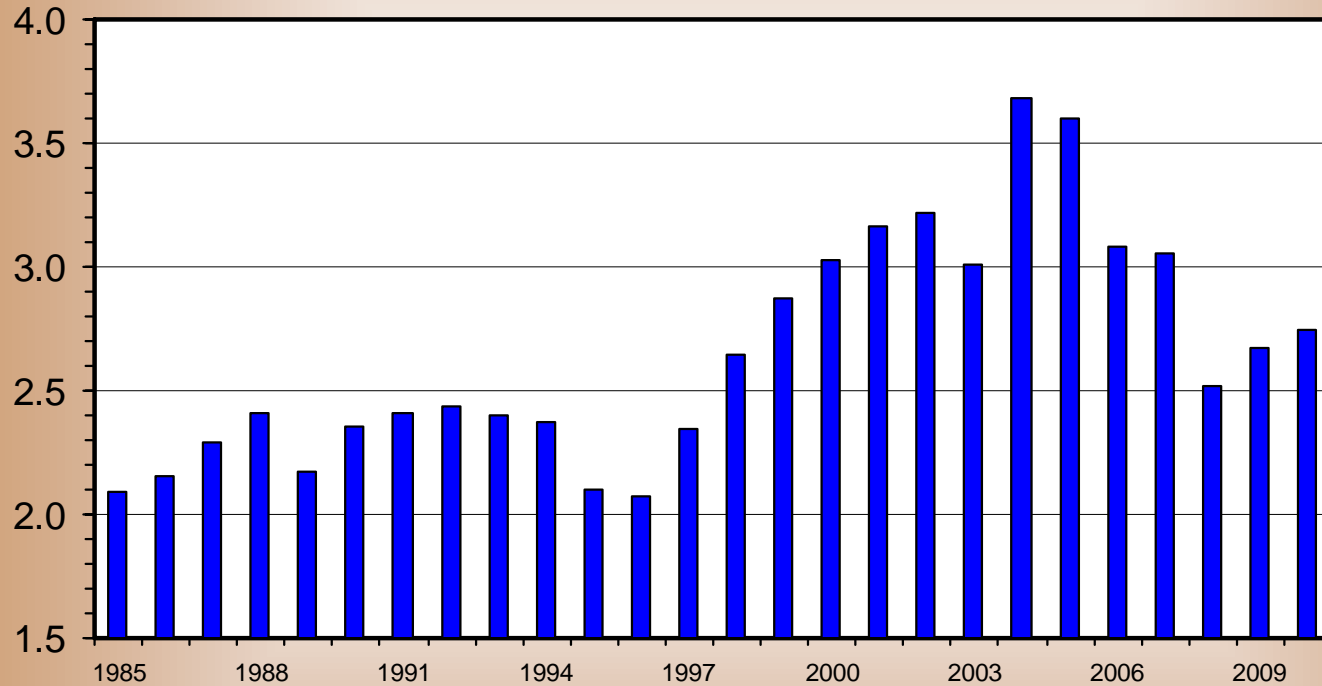


Livestock Marketing Information Center

U S BEEF AND VEAL IMPORTS

Carcass Weight, Annual

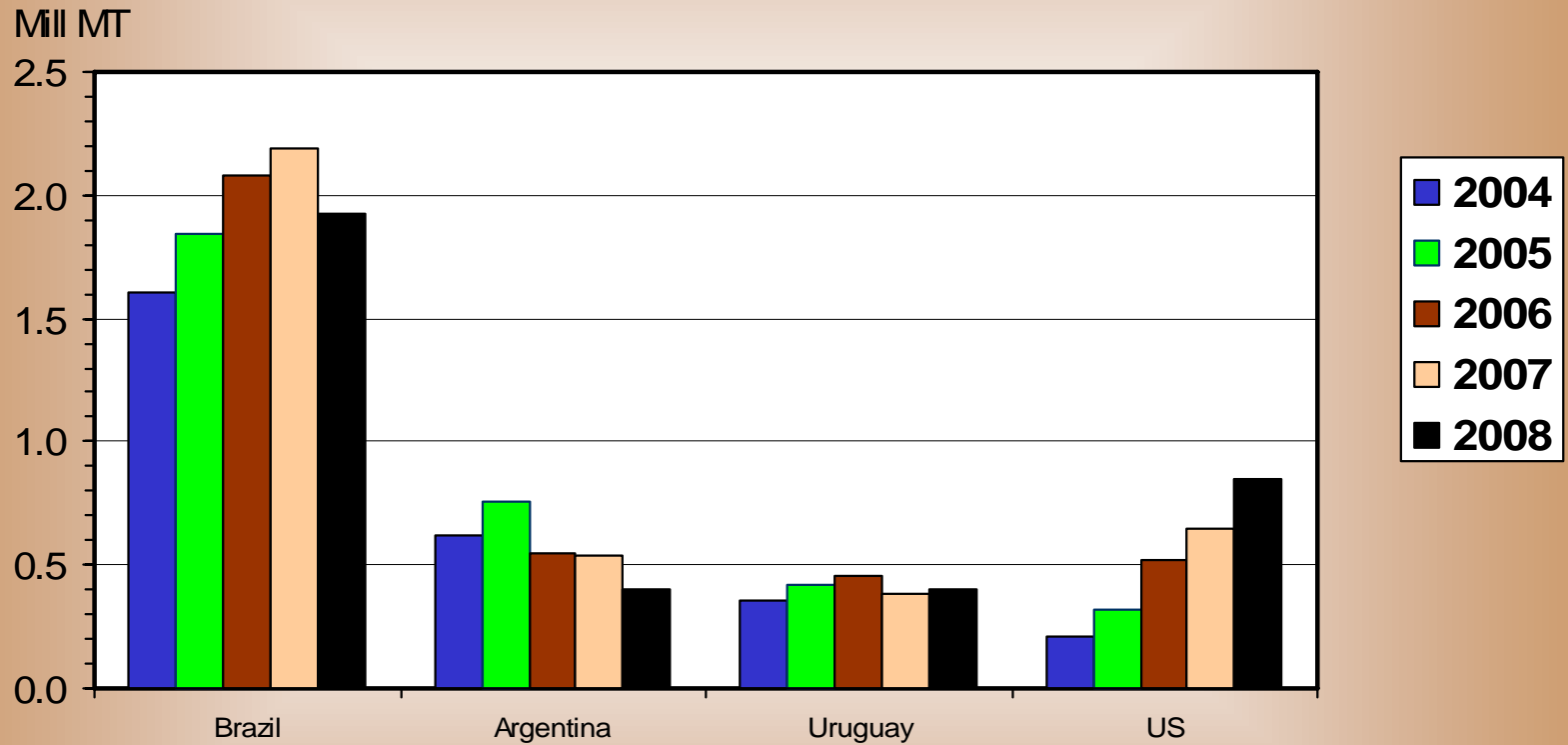
Bil. Pounds



Livestock Marketing Information Center

BEEF AND VEAL EXPORTS

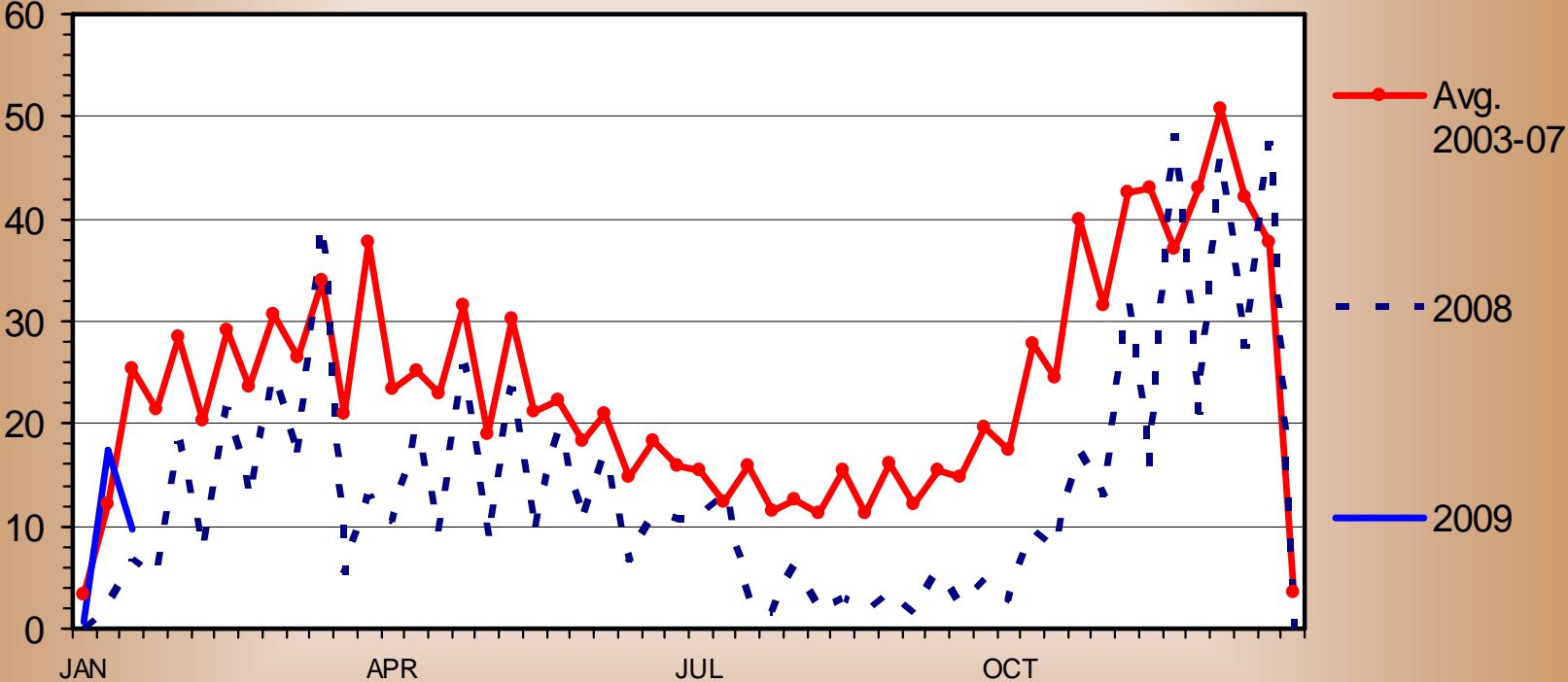
Carcass Weight, Annual



FEEDER CATTLE IMPORTS FROM MEXICO

Weekly

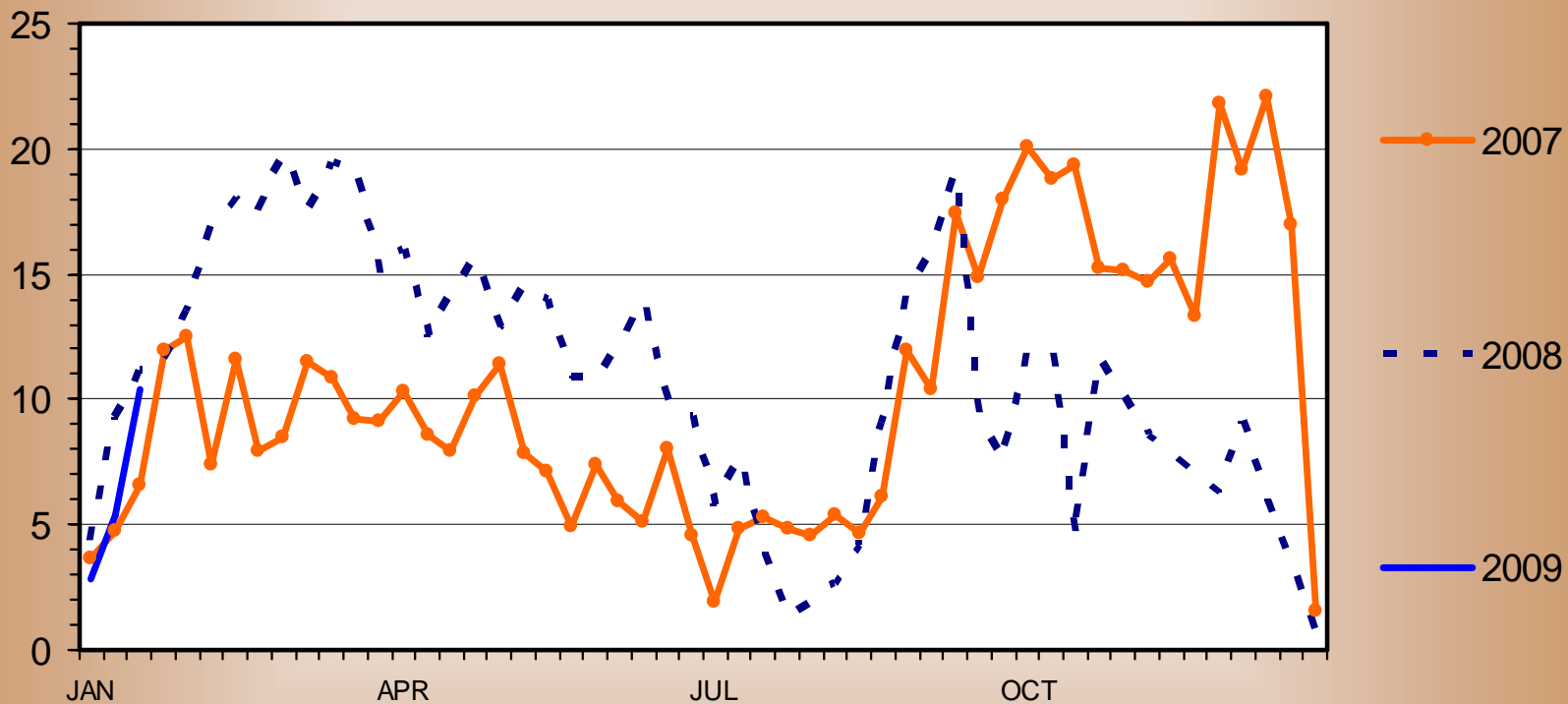
Thou. Head



FEEDER CATTLE IMPORTS FROM CANADA

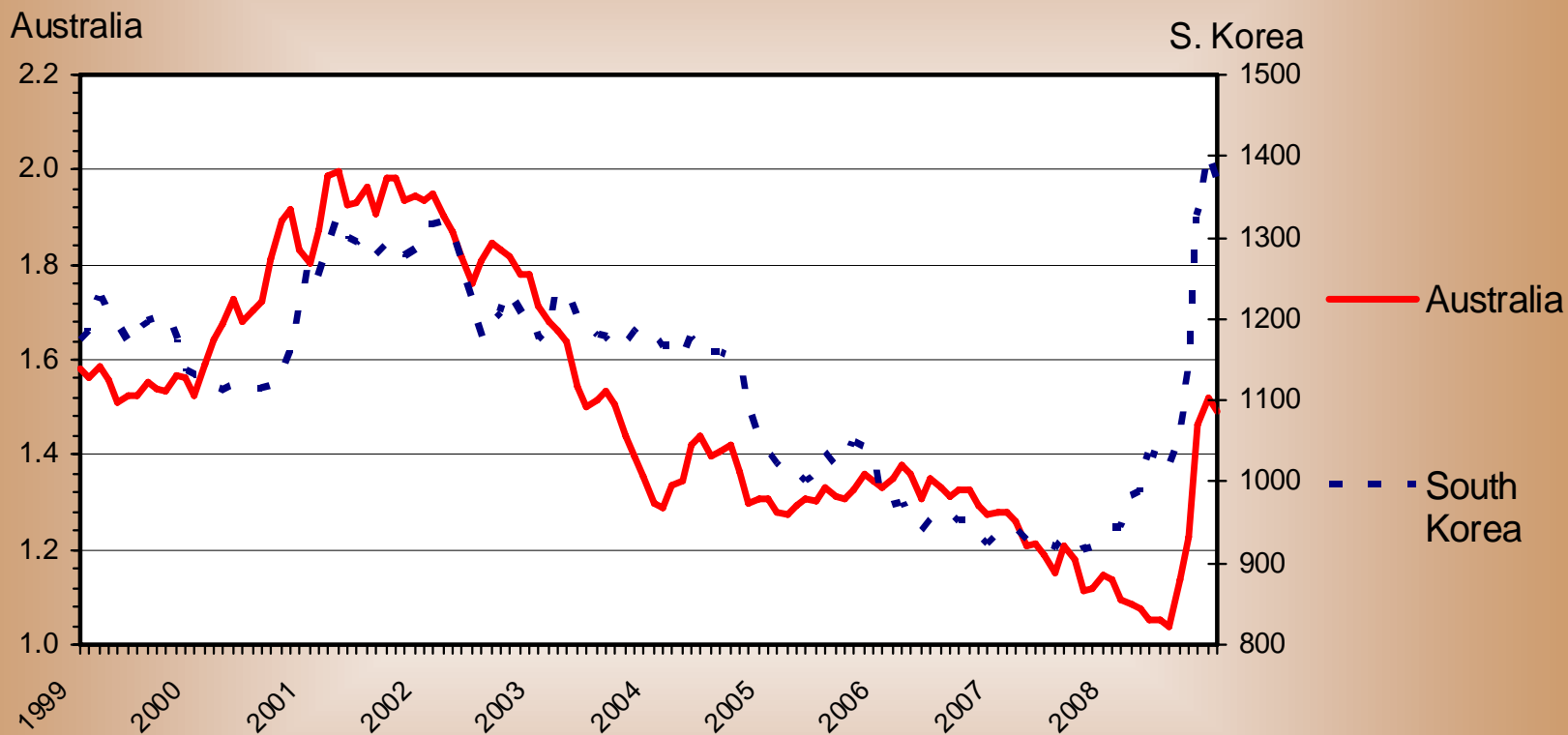
Weekly

Thou. Head



EXCHANGE RATE

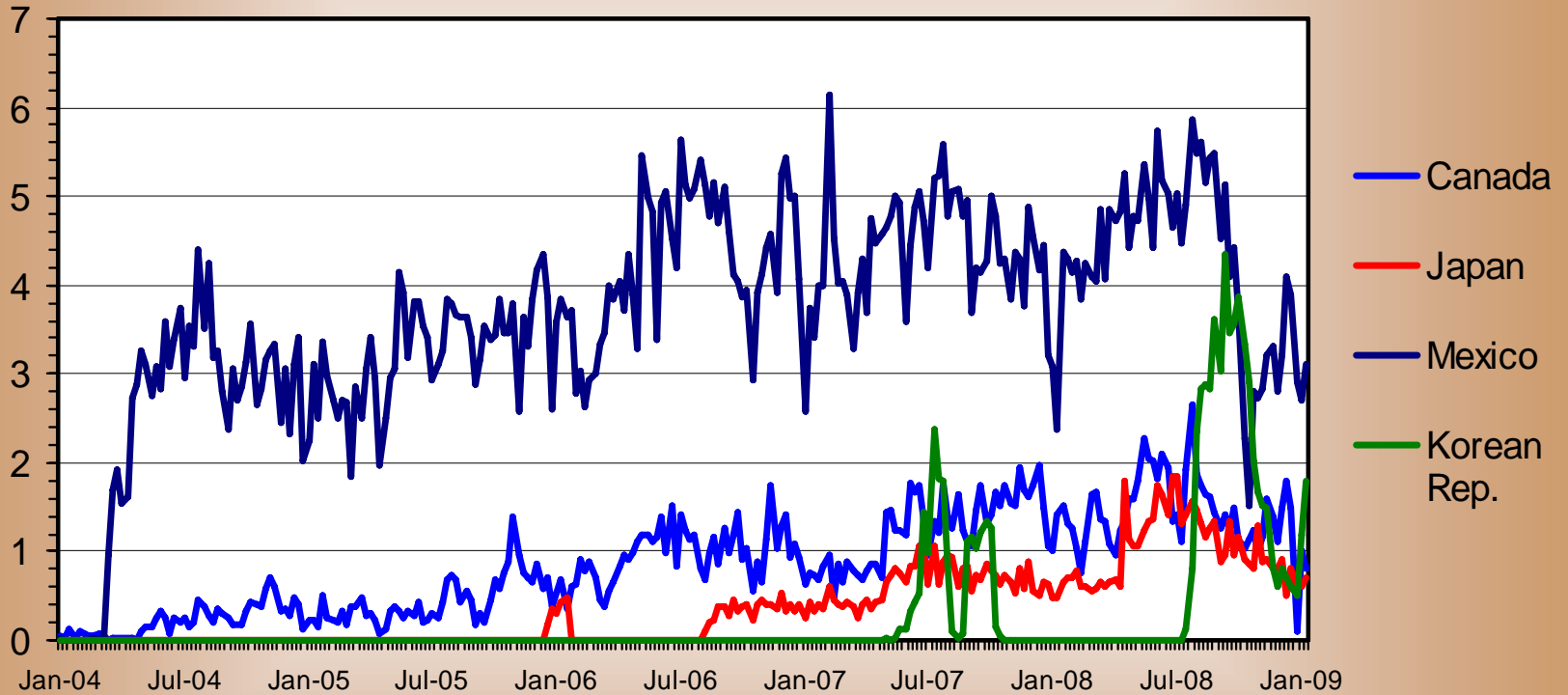
US Dollar base, Monthly



U.S. EXPORTS OF BEEF MUSCLE CUTS

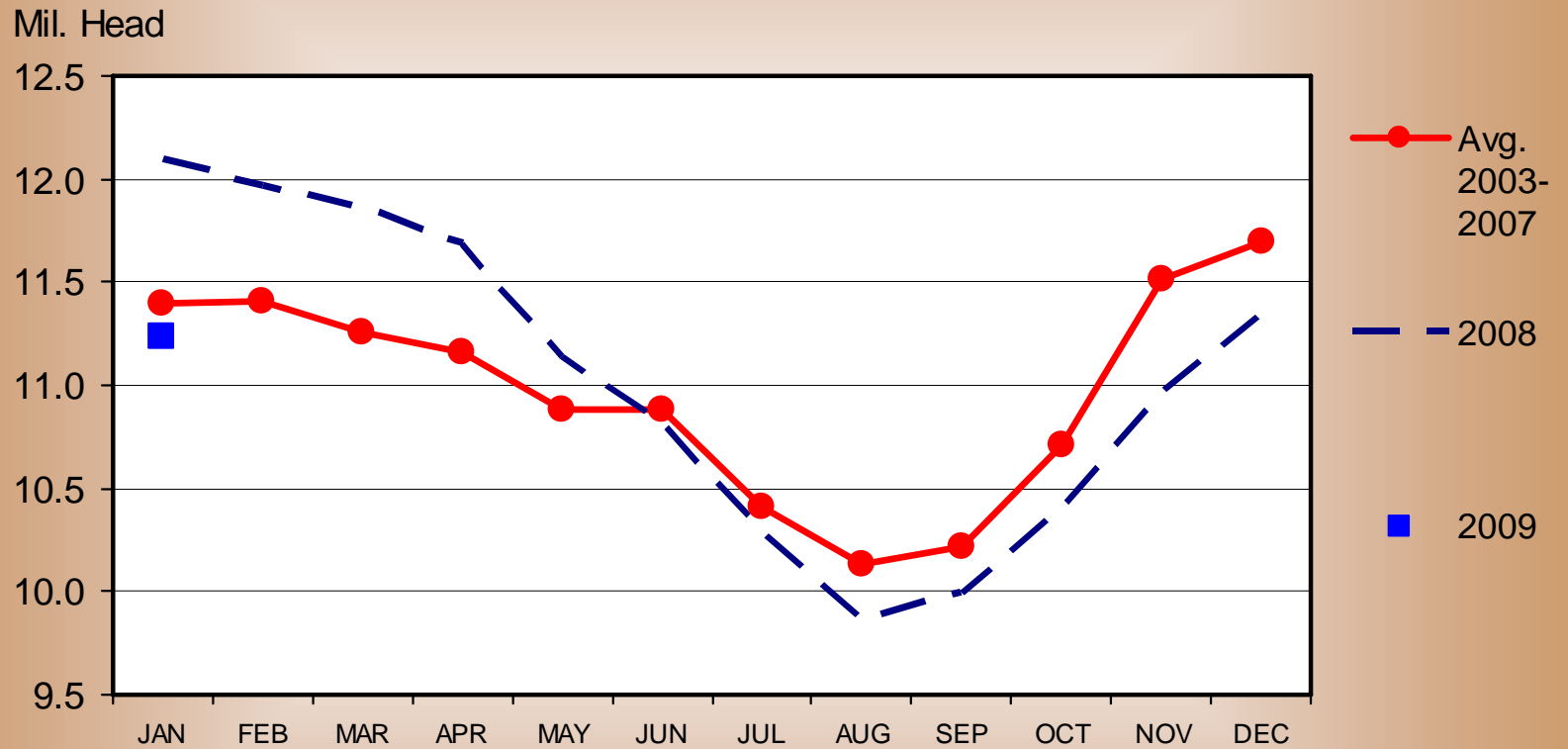
Weekly

1000 MT



CATTLE ON FEED

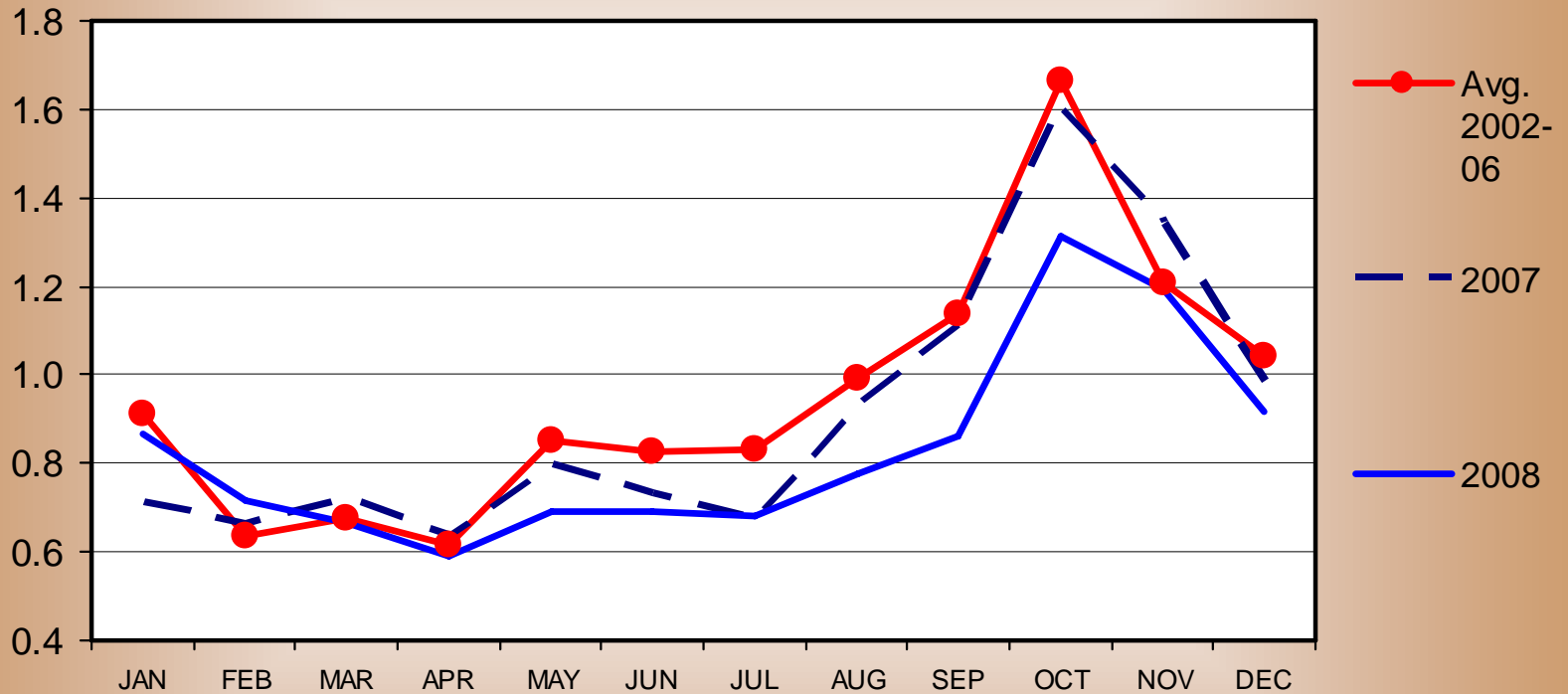
US Total, Monthly



CATTLE PLACED WEIGHING LESS THAN 700 POUNDS

1,000 Plus Capacity Feedlots, U.S., Monthly

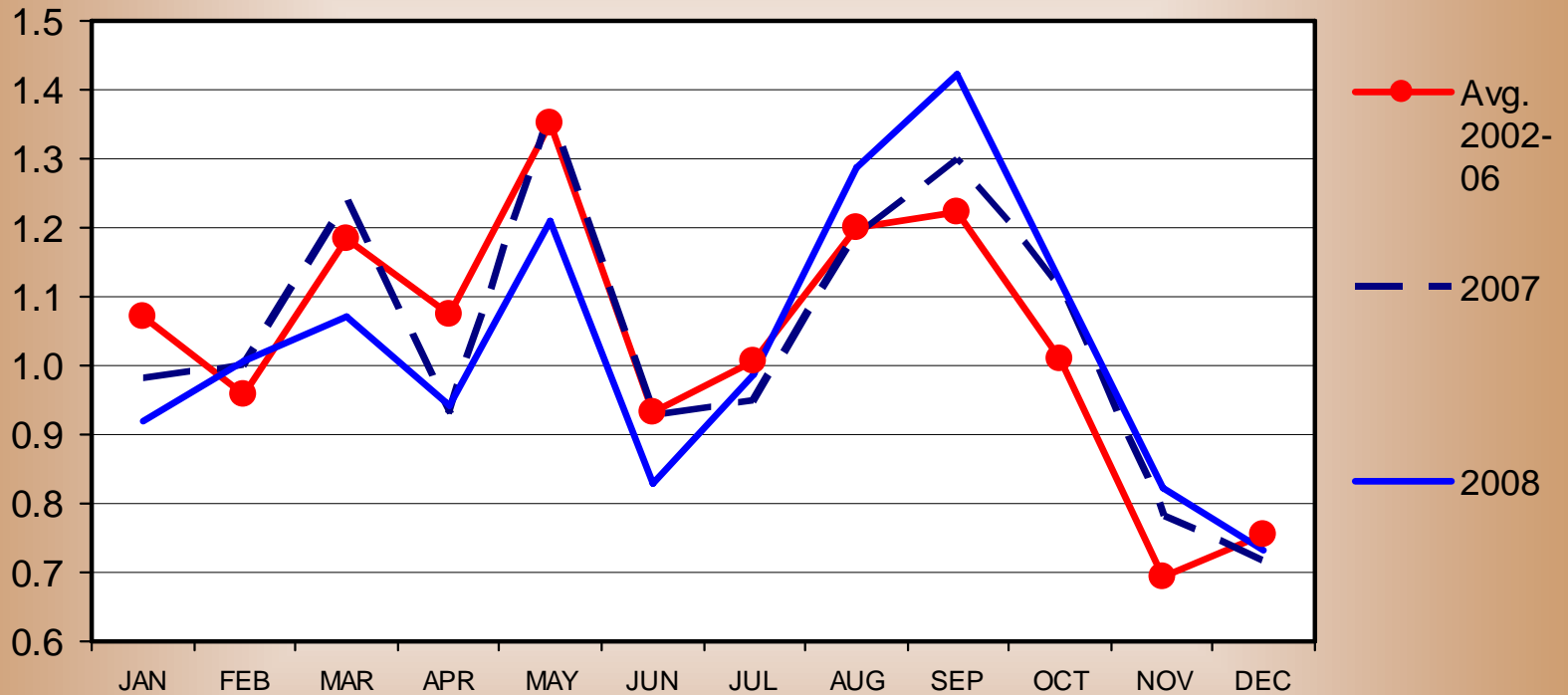
Mil. Head



CATTLE PLACED WEIGHING MORE THAN 700 POUNDS

1,000 Plus Capacity Feedlots, U.S., Monthly

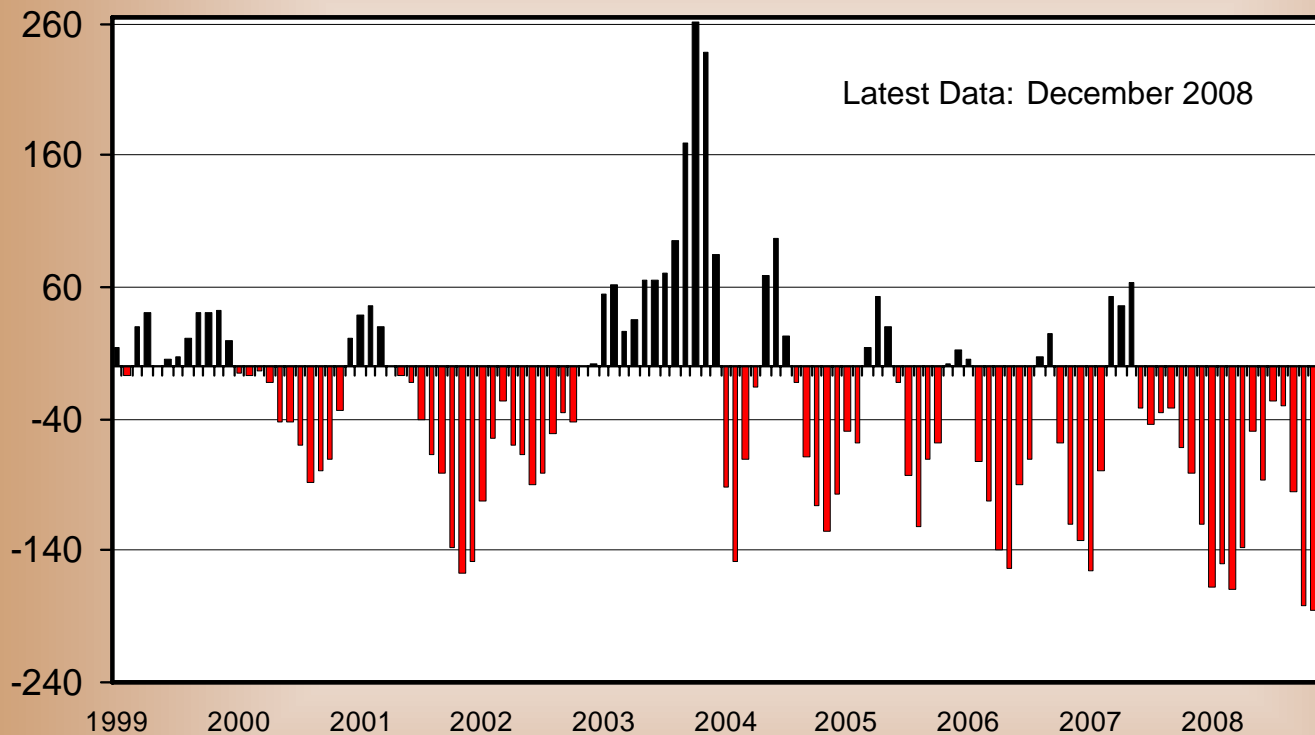
Mil. Head



AVERAGE RETURNS TO CATTLE FEEDERS

Feeding 725 Lb. Steers, S. Plains, Monthly

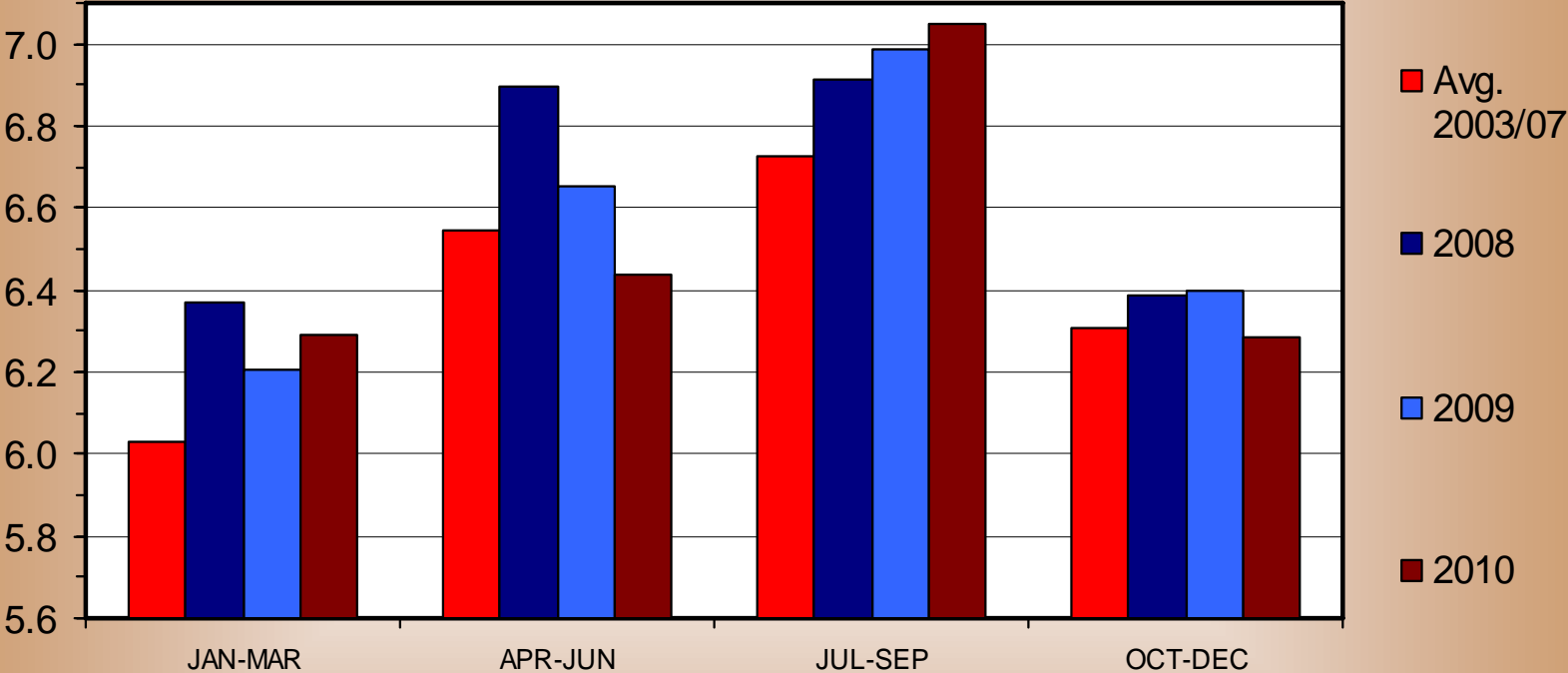
\$ Per Head

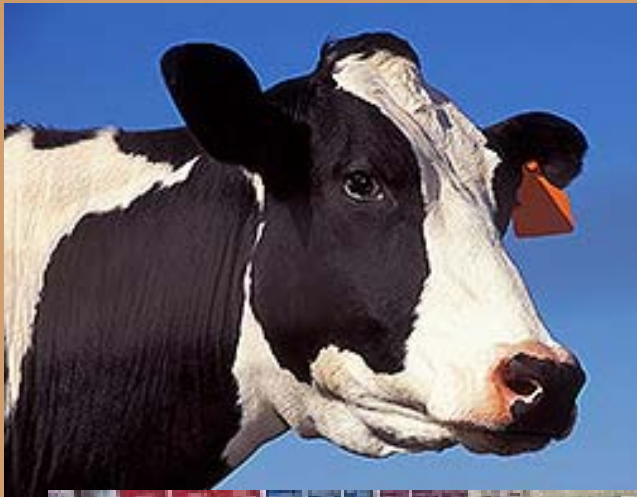


COMMERCIAL BEEF PRODUCTION

Quarterly

Bil. Pounds





Dairy

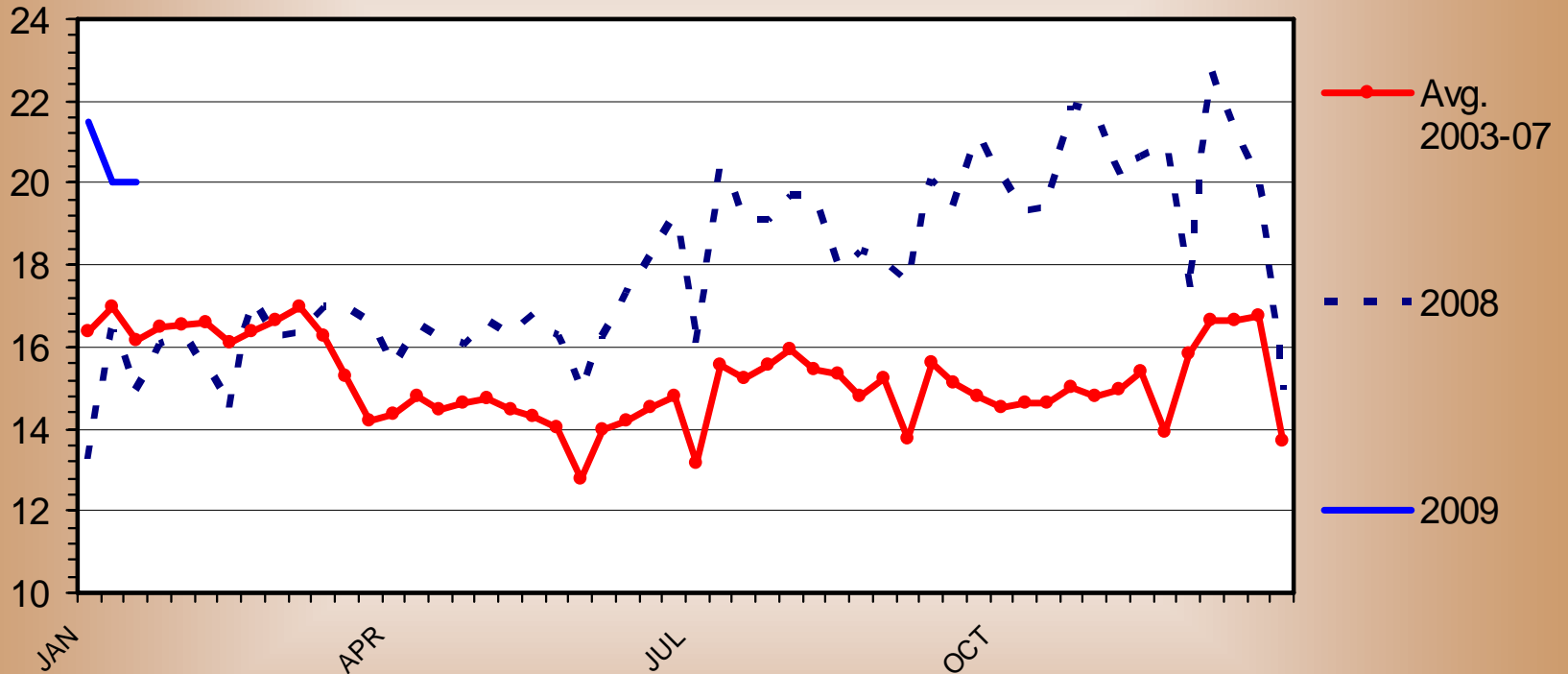


Livestock Marketing Information Center

CALF SLAUGHTER

Federally Inspected, Weekly

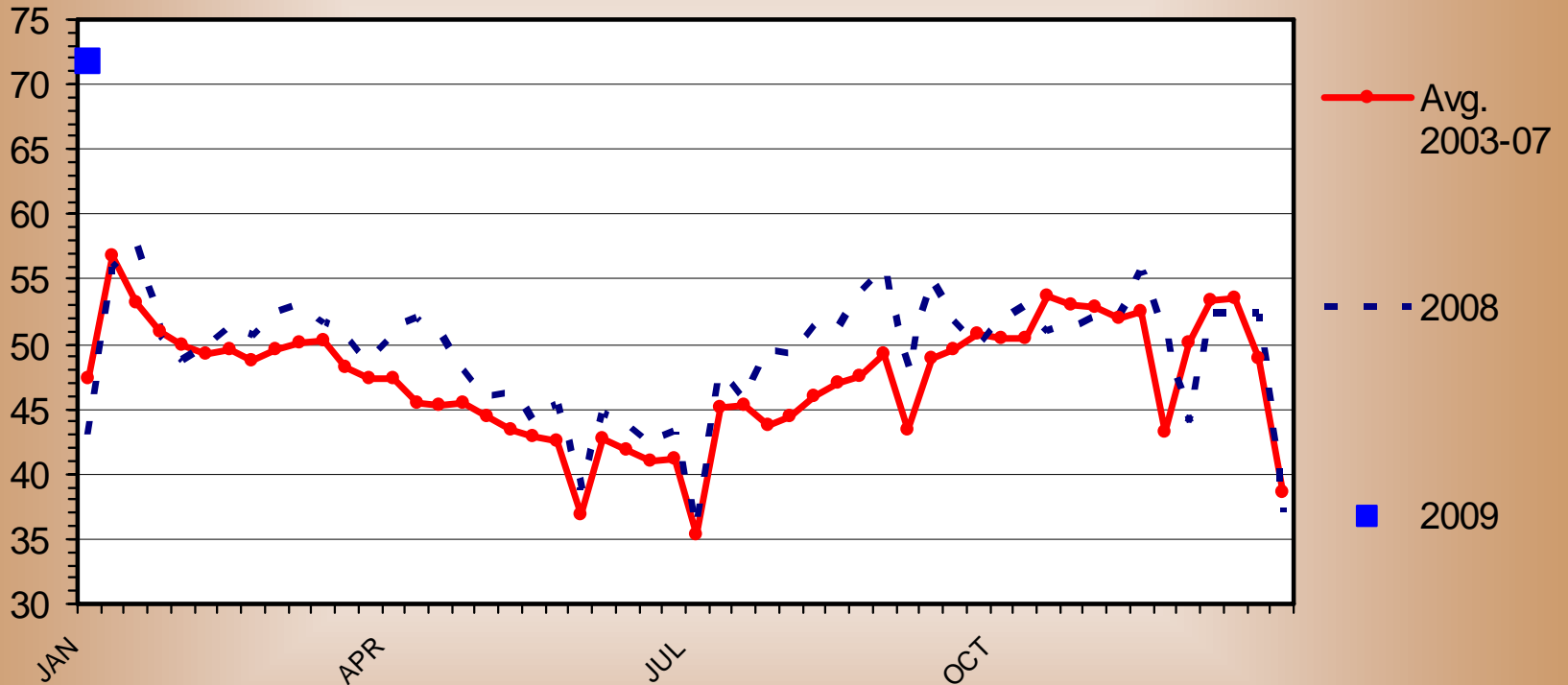
Thou. Head



DAIRY COW SLAUGHTER

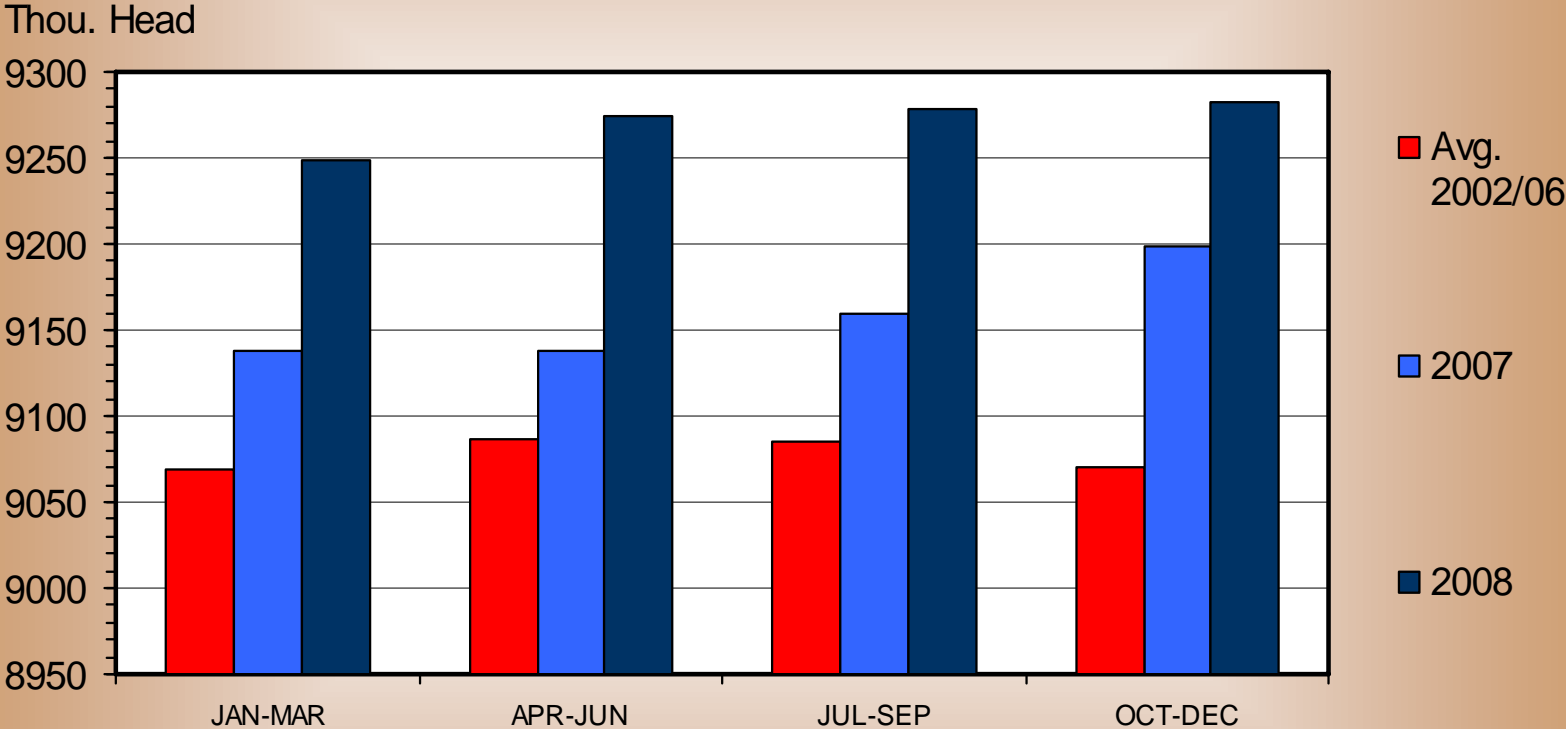
Federally Inspected, Weekly

Thou. Head



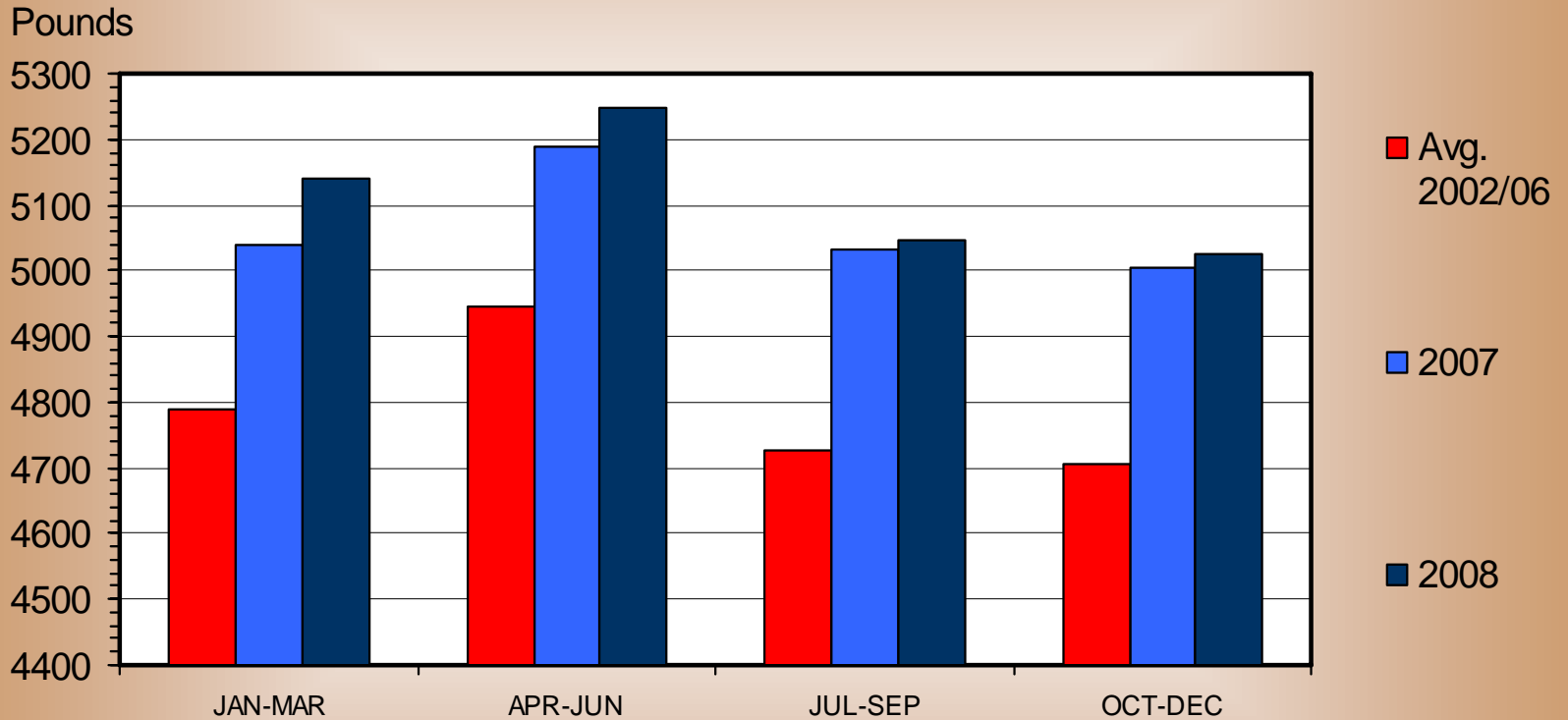
DAIRY COW INVENTORY

US, Average, Quarterly



MILK PRODUCED PER COW

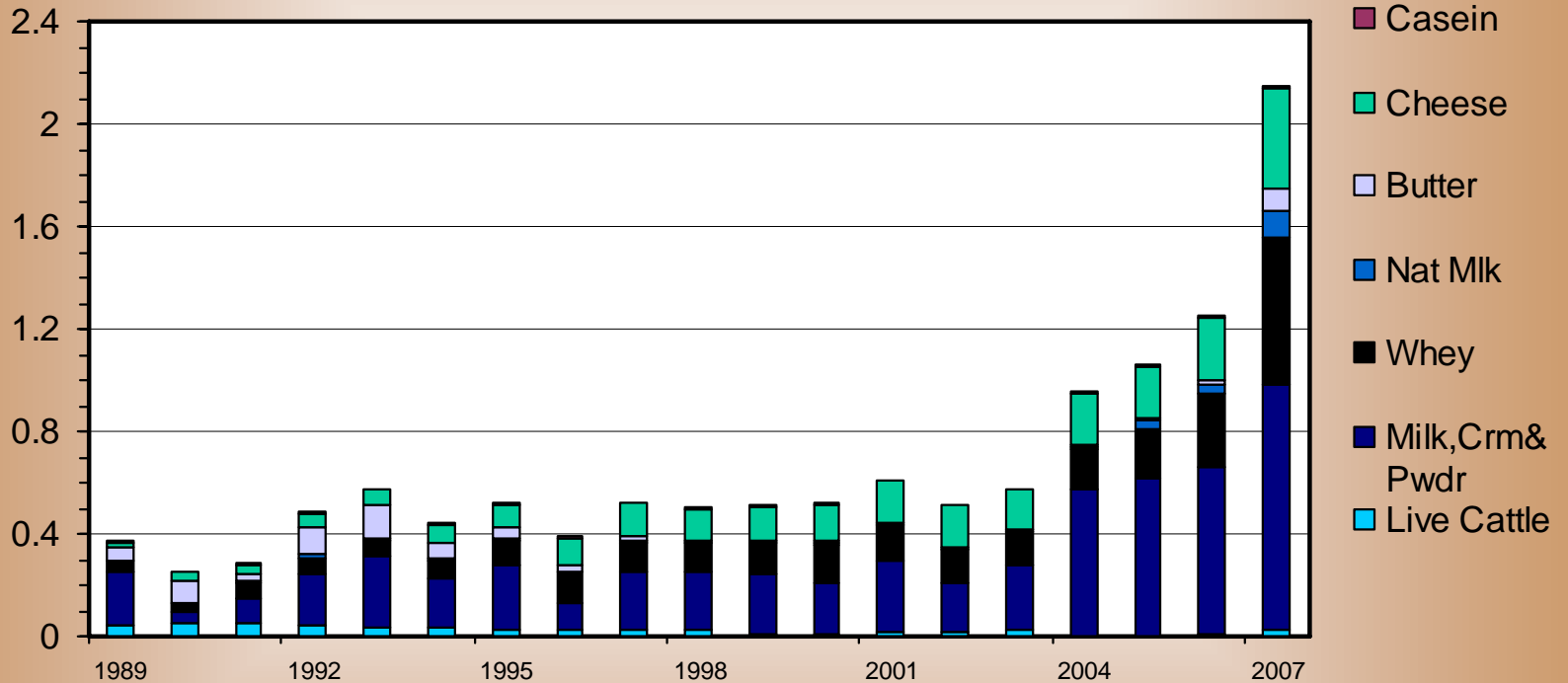
US Total, Quarterly



U S DAIRY INDUSTRY EXPORT VALUES

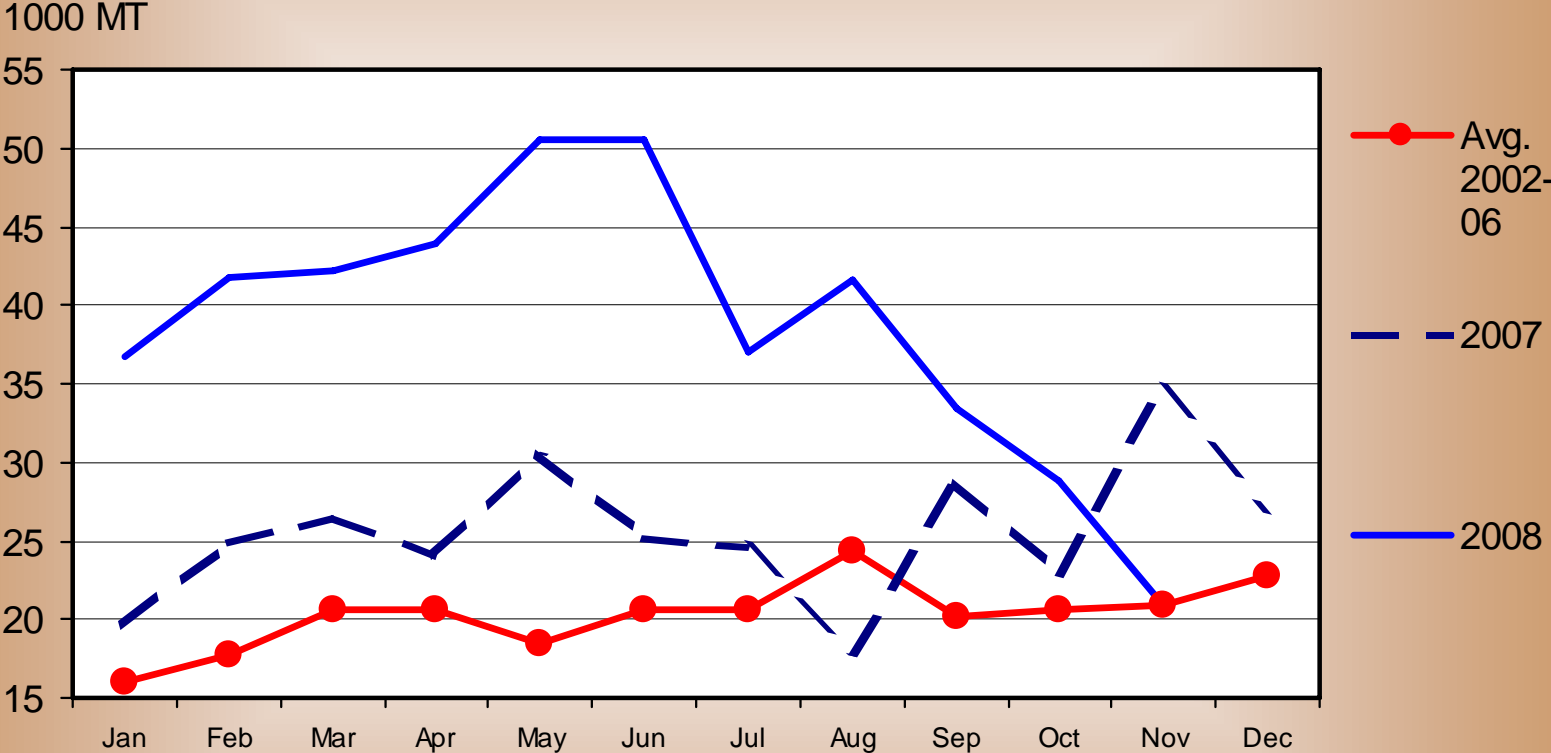
Annual

Bil. \$



MILK AND CREAM EXPORTS

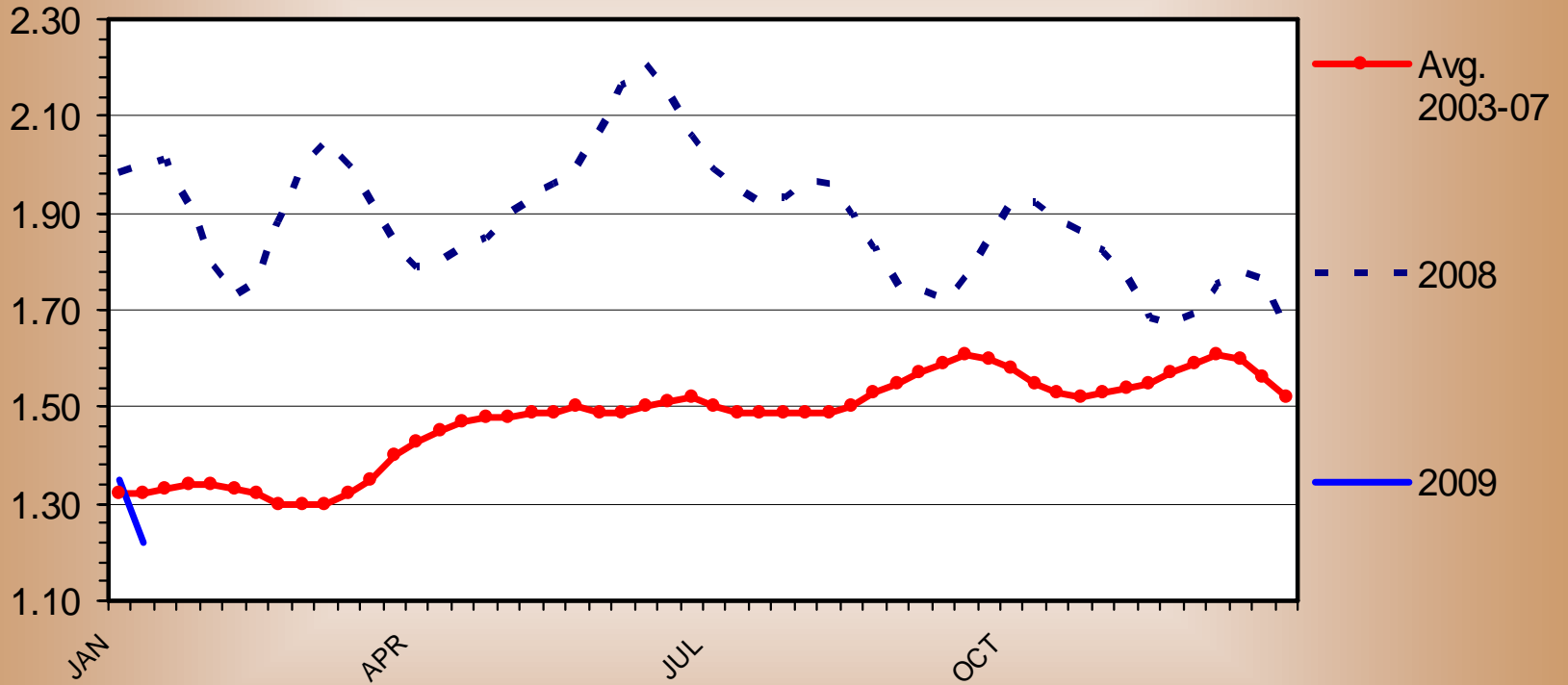
Concentrated or Sweetened, Monthly



CHEDDAR CHEESE PRICES

40 Pound Block, US, Weekly

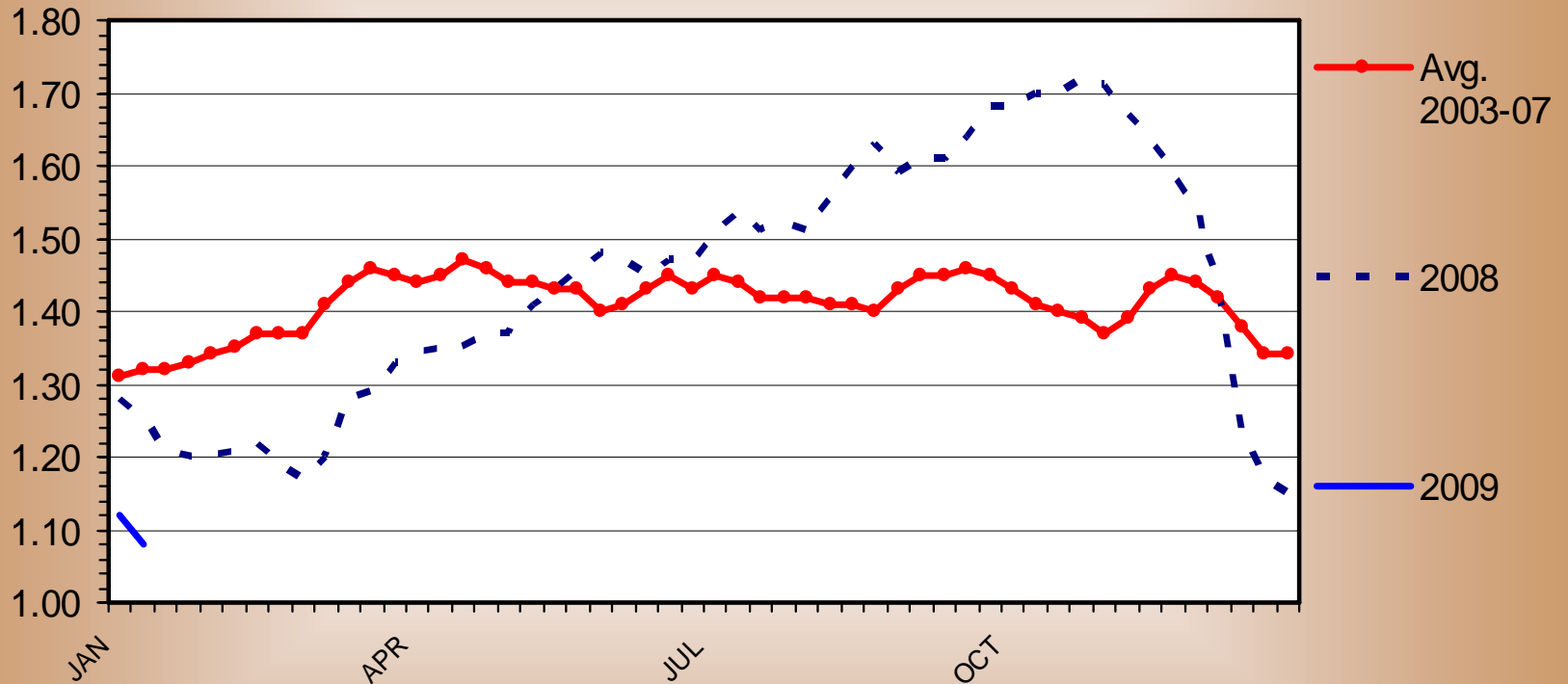
\$ Per Pound



BUTTER PRICES

US, Weekly

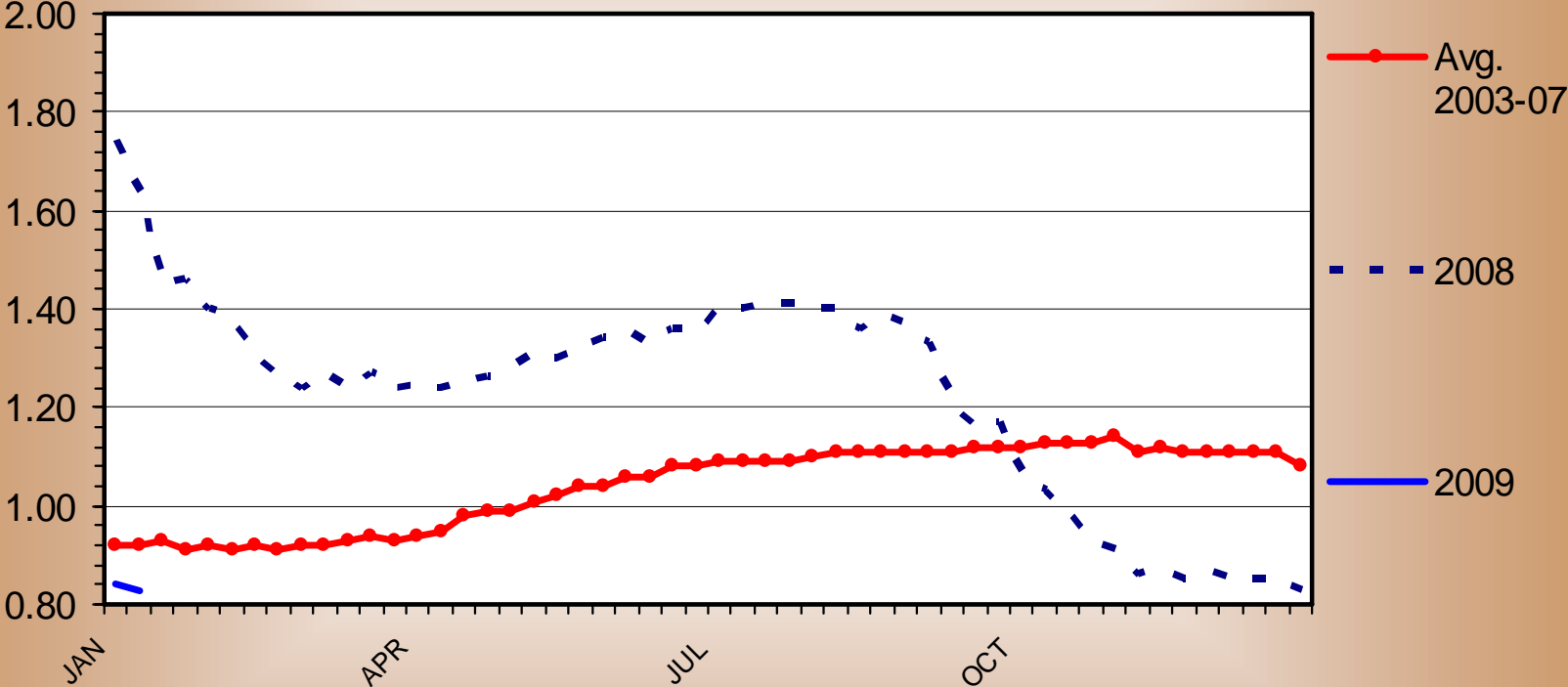
\$ Per Pound



NONFAT DRY MILK PRICES

US, Weekly

\$ Per Pound



Sheep & Lamb

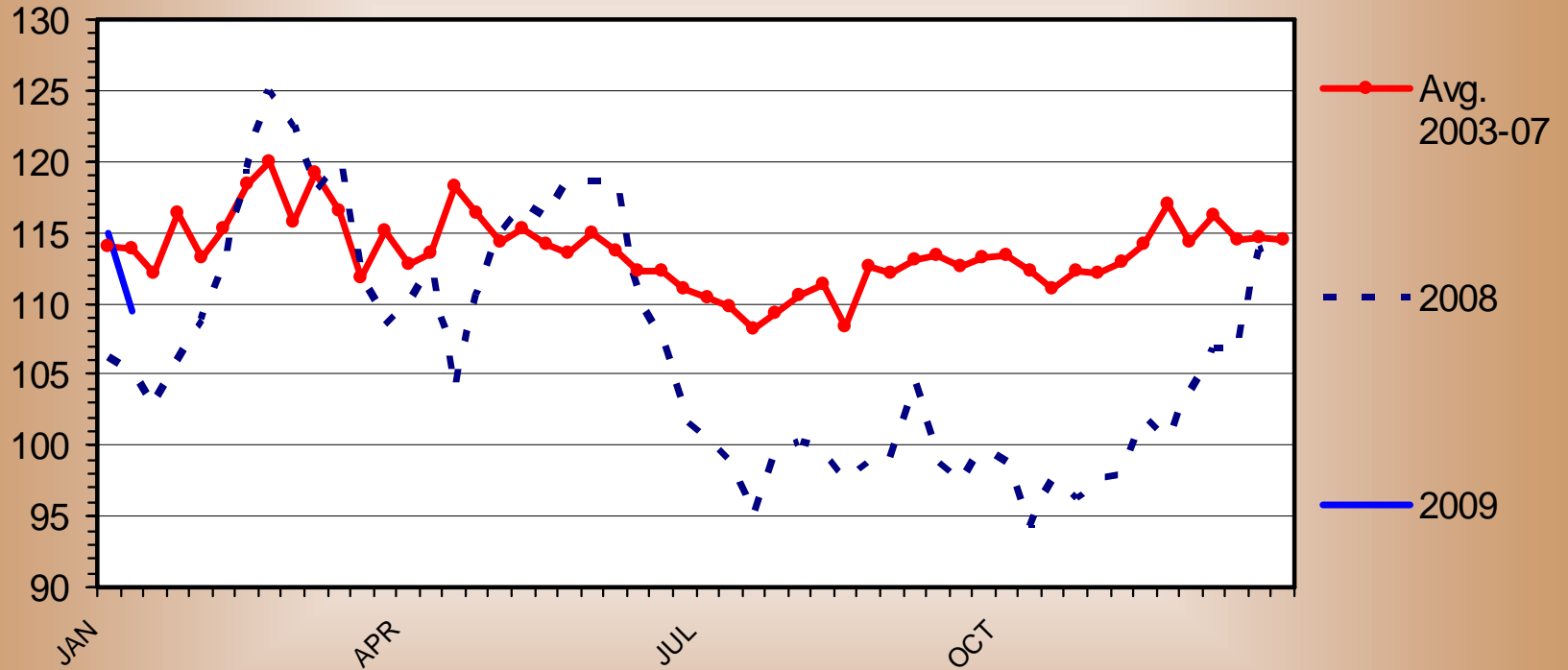


Livestock Marketing Information Center

FEEDER LAMB PRICES

70-90 Pounds, San Angelo, TX Auction, Weekly

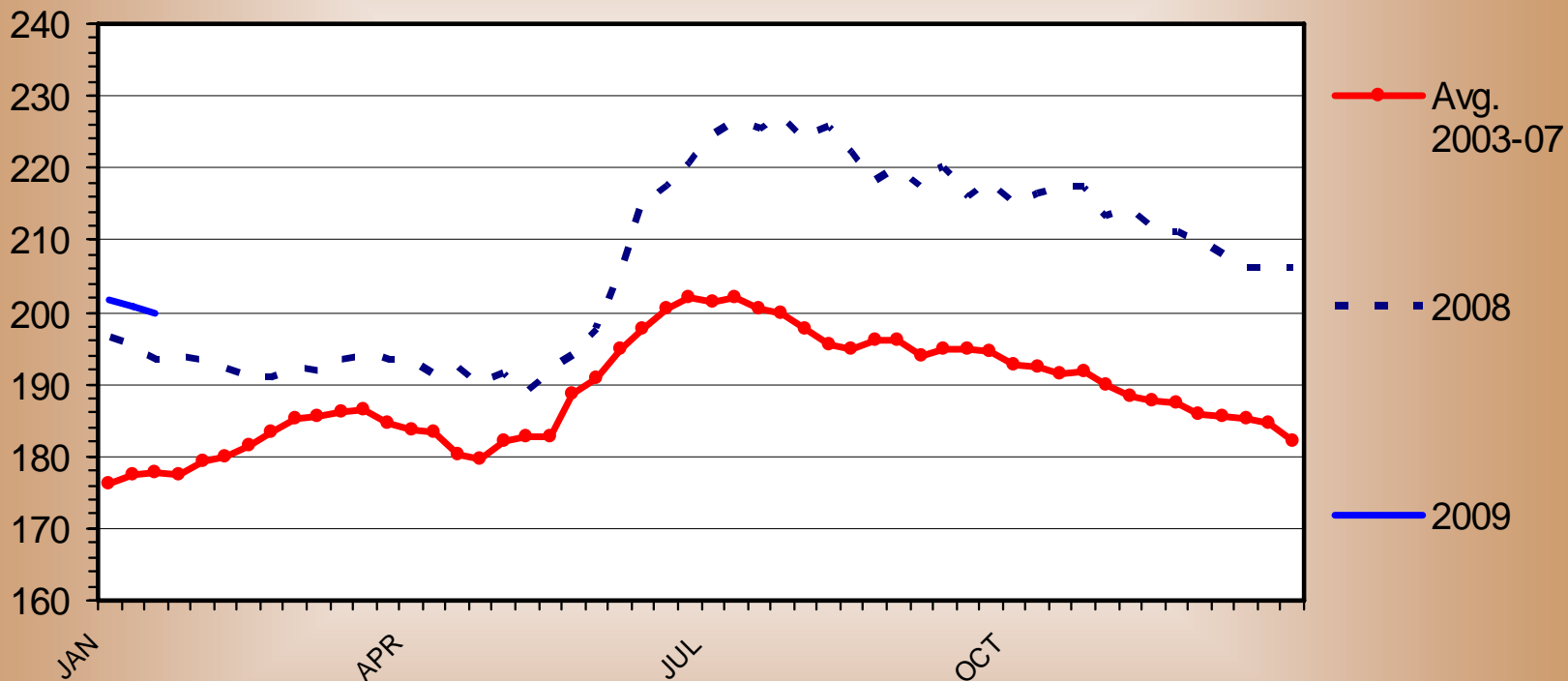
\$ Per Cwt.



SLAUGHTER LAMB PRICES

Western (Colorado) Direct, Hot Carcass, Weekly

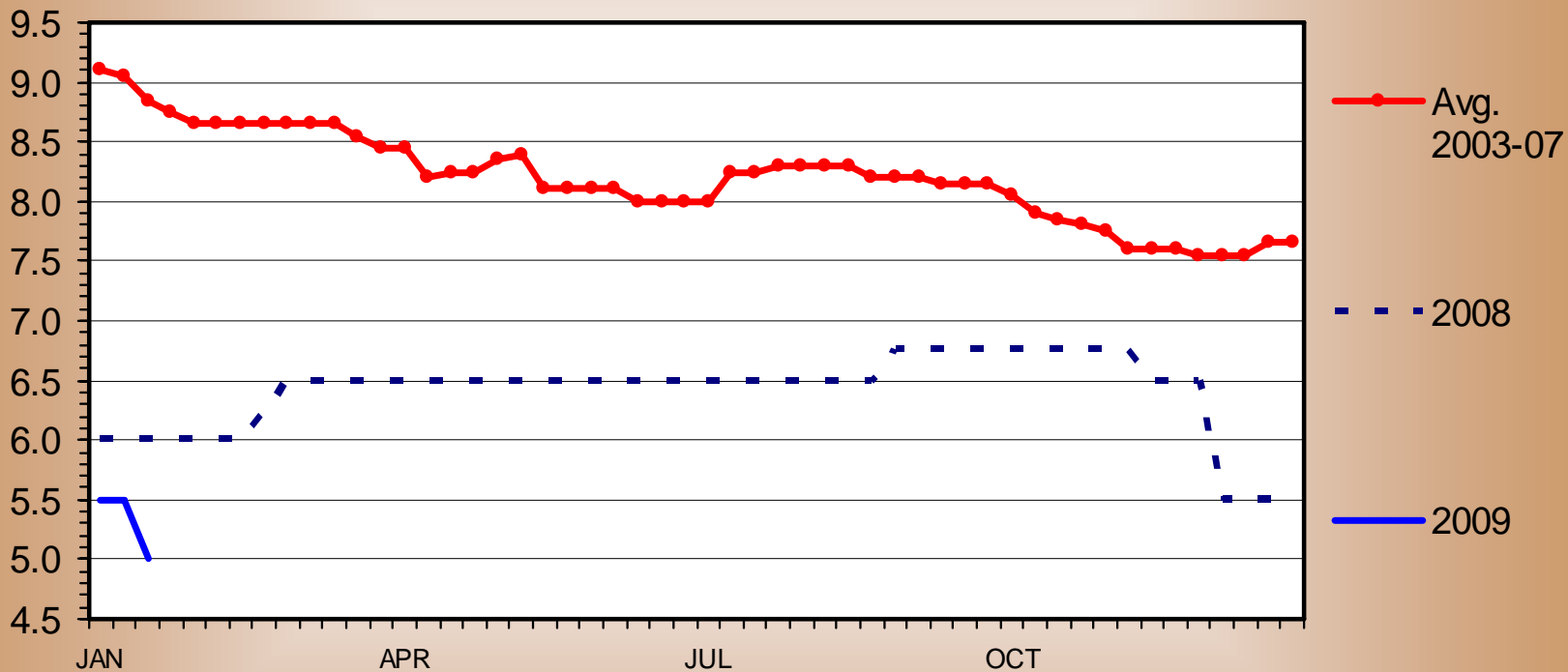
\$ Per Cwt.



NO. 1 U.S. LAMB PELT PRICES

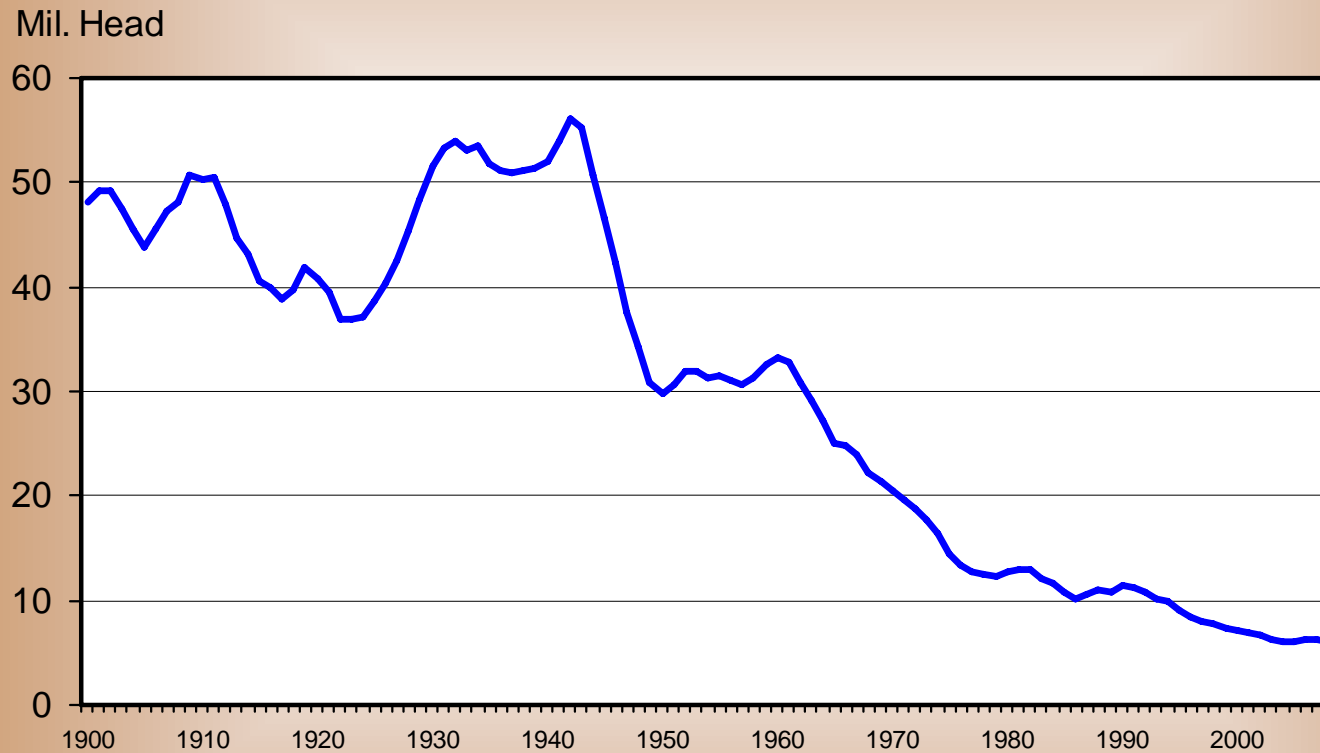
FOB, Weekly

\$ Per Pelt



TOTAL SHEEP & LAMB POPULATION

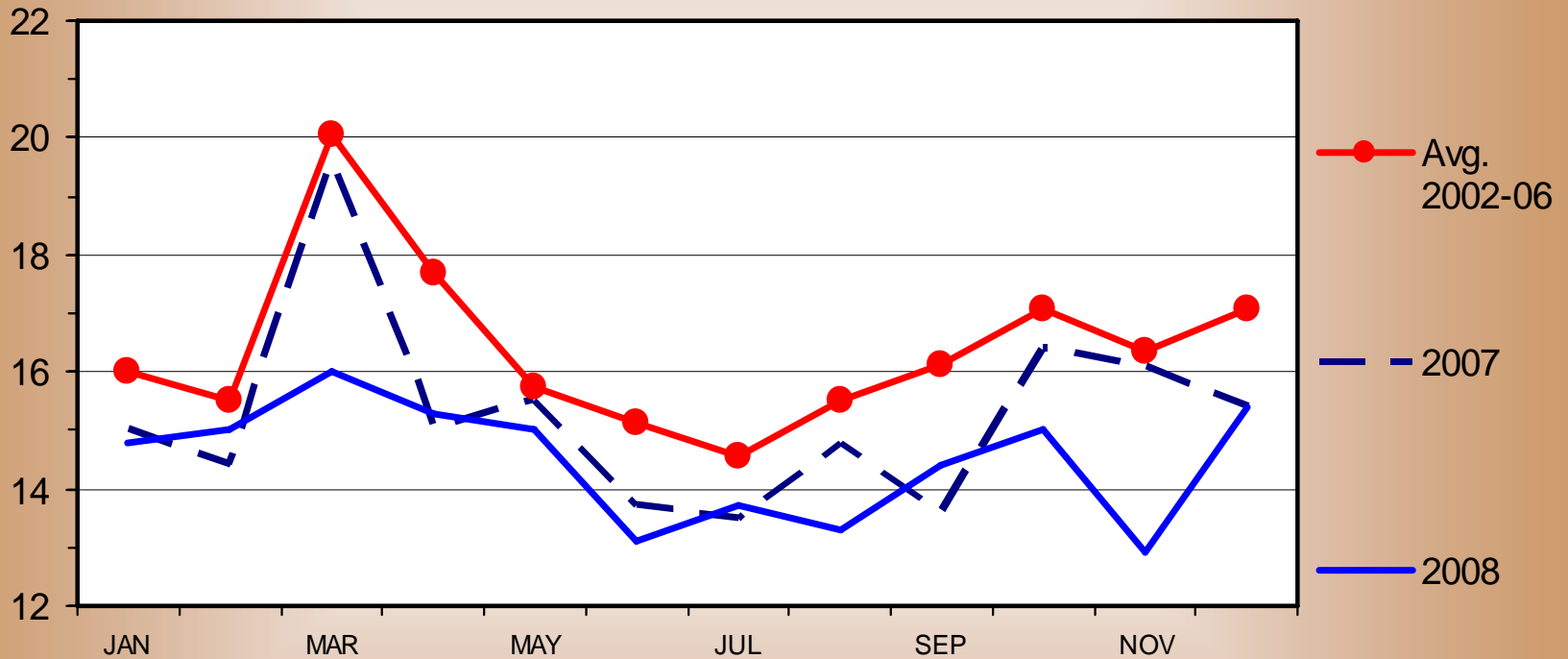
January 1, U.S., Annual



COMMERCIAL LAMB AND MUTTON PRODUCTION

Monthly

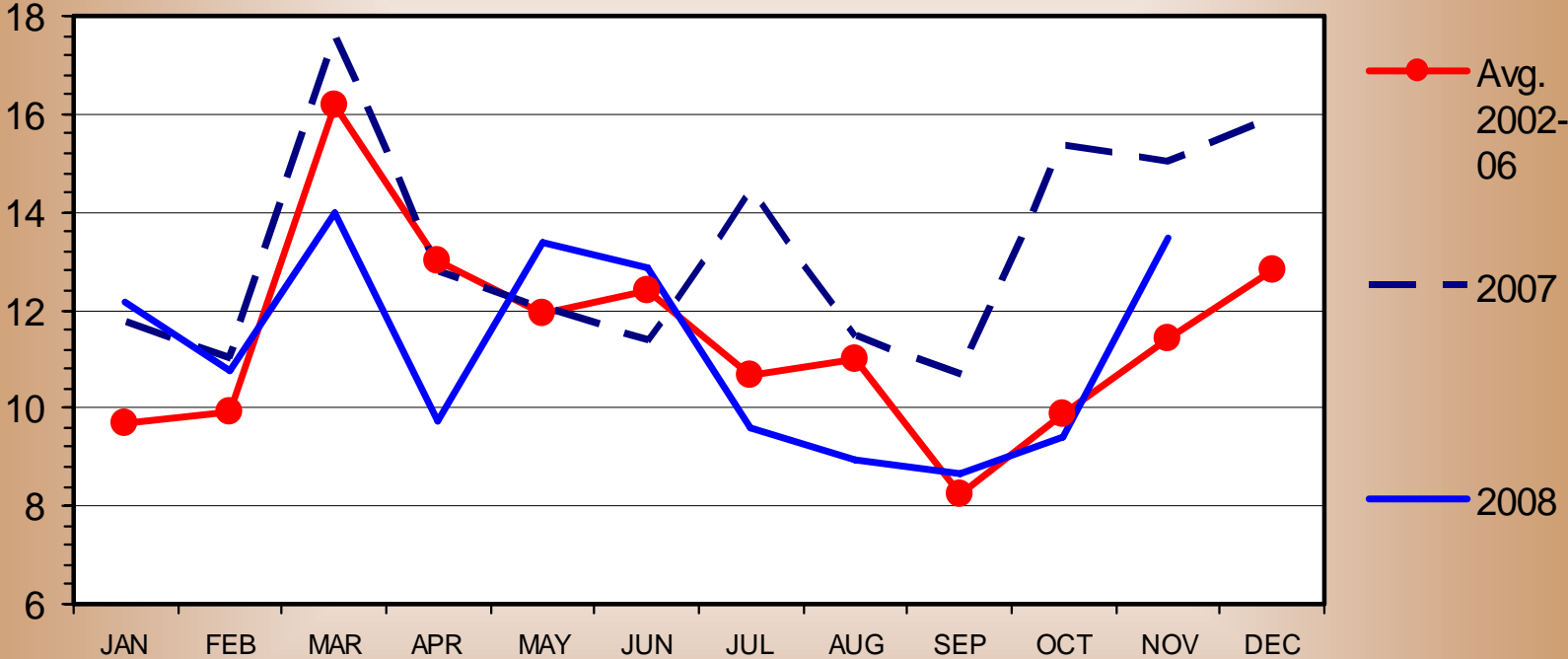
Mil. Pounds



U S LAMB IMPORTS

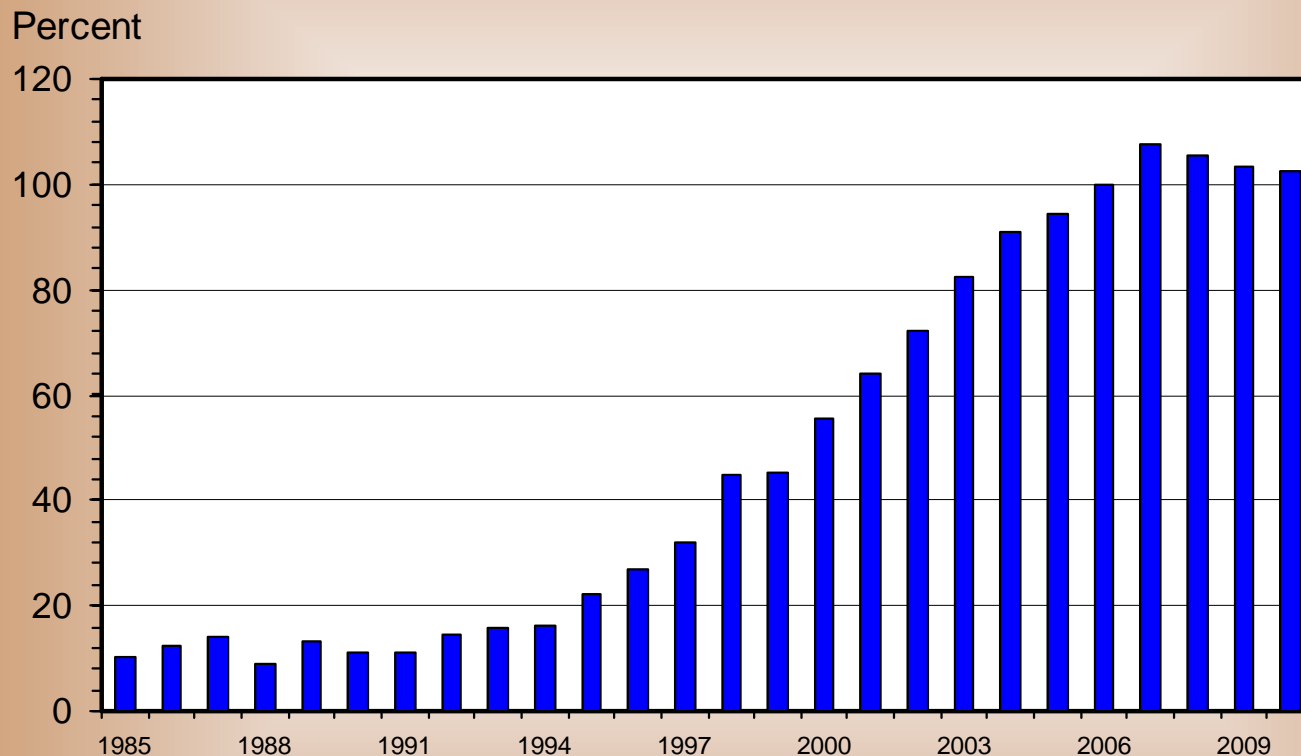
Carcass Weight, Monthly

Mil. Pounds



U S LAMB AND MUTTON IMPORTS

As a Percentage of Production, Carcass Weight, Annual

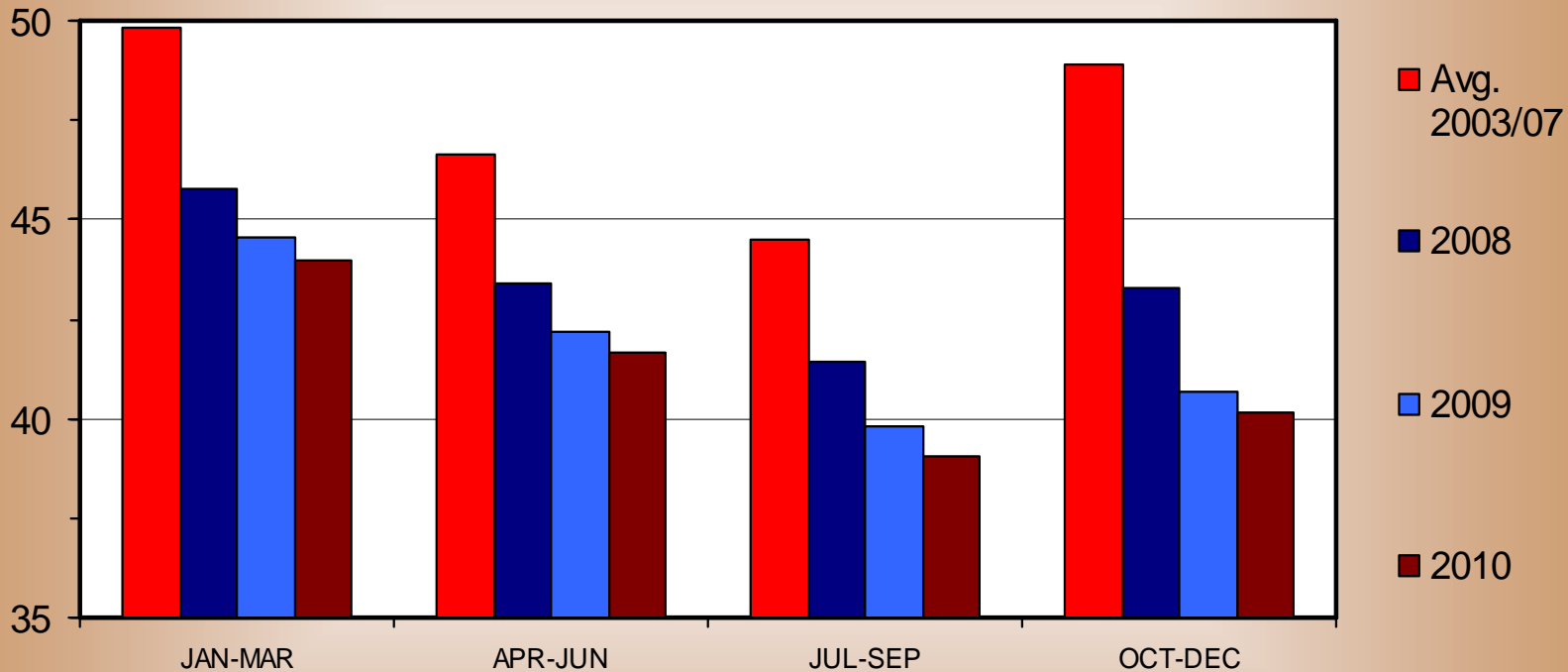


Livestock Marketing Information Center

COMMERCIAL LAMB AND MUTTON PRODUCTION

Quarterly

Mil. Pounds



www.lmic.info

Livestock Marketing Information Center

Situation & Analysis | Prices & Production | Key Graphs | Quick Market Reports | Retail Meat Prices | Members List & Reports | Members Only | About LMIC

Welcome to the Livestock Marketing Information Center (LMIC) Website

U.S. ALL MAY STOCKS
May 1 (Beginning of Crop Year)

Use the tabs at the top of each page or links on the right to navigate the many resources on this site.

[Chart of the Week](#)

Hot Topics

- [Livestock & Meat Marketing Arrangements](#)

Members Only Area

- [Monitor](#)
- [Spreadsheets](#)
- [Graphs](#)
- [Tables](#)
- [Analysis and Comments](#)

Public Areas

- [Recent Price & Production Summary](#)

Current Situation and Analysis

Thank You!

Livestock Marketing Information Center